

## Ral

**Catalog Number:** 26065

**Gene Symbol:** RAL

**Description:** Anti-Ral Mouse Monoclonal Antibody

**Background:** The Ras-like small G proteins, RalA/B, are important components of Ras signaling pathways, implicated in the initiation and maintenance of tumorigenic transformation, as well as vesicle transport, apoptosis, transcription, cell migration, and cell proliferation.

**Immunogen:** Recombinant full length protein of RalB.

**Tested applications:** ELISA, WB, IHC, IP

**Recommended dilutions:**

ELISA 1:100-1:5000

WB 1:100-1:2000

IHC 1:50-1:100

**Concentration:** 1 mg/ml

**Host:** mouse

**Clonality:** Monoclonal

**Isotype:** IgG

**Purity:** Purified from ascites

**Format:** Liquid

**Storage buffer:**

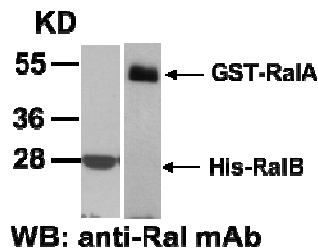
Preservative: no

Constituents: PBS (without Mg<sup>2+</sup> and Ca<sup>2+</sup>), pH 7.4, 150 mM NaCl, 50% glycerol

**Species Reactivity:** Ral antibody recognizes RalA and RalB of vertebrates.

**Storage Conditions:** Store at -20°C. Avoid freeze / thaw cycles

### Western blot:



Western blot analysis of RalA and RalB recombinant proteins (Cat# 26065).

For research use only. Not for diagnostic or therapeutic applications.