

## Orai1

**Catalog Number:** 21002

**Gene Symbol:** Orai1

**Description:** Orai1 Rabbit Polyclonal Antibody (Orai1-L2)

**Background:** Store-operated calcium channels (SOCs) play essential functions in various physiological processes. Orai1 (also named CRACM1) is a critical molecular component of SOCs. Orai1 protein is a ~35 kDa plasma membrane protein with 4 transmembrane domains. Human patients with a severe combined immunodeficiency (SCID) syndrome possess point mutations in Orai1 gene.

**Immunogen:** A peptide from the extracellular loop 2 region of human Orai1

**Tested applications:** ELISA, WB

**Recommended dilutions:**

ELISA 1:1000-1:5000,

WB 1:1000-1:2000,

IHC 1:100-1:200

**Host:** Rabbit

**Clonality:** Polyclonal

**Isotype:** IgG

**Purity:** Immunogen affinity purified

**Format:** Liquid

**Storage buffer:**

Preservative: 0.01% sodium azide

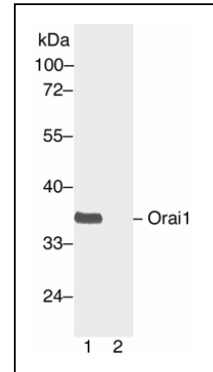
Constituents: 50mM NaHCO<sub>3</sub>-Glycine, 0.15M

NaCl, pH7.4

**Species Reactivity:** Orai1-L2 antibody recognizes Orai1 from human.

**Storage Conditions:** Store at -20°C. Avoid freeze / thaw cycles

### Western blot



Western blot analysis of Orai1 protein. Human Orai1 plasmid DNA was transiently transfected into HEK-293 cells. Whole-cell lysate was used for western blot in the absence (A) or presence (B) of antigen peptide.

For research use only. Not for diagnostic or therapeutic applications.

24 Whitewoods Lane, Malvern, PA 19355 Tel: (610) 585-8761 FAX: (610) 578-0821  
E-mail: [sale@neweastbio.com](mailto:sale@neweastbio.com) Web: [www.neweastbio.com](http://www.neweastbio.com)