

## SLC7A5

**Catalog Number:** 21118

**Gene Symbol:** SLC7A5

**Description:** Anti- SLC7A5 Rabbit Polyclonal Antibody

**Background:** Solute carrier family 7 member 5 (also known as large neutral amino acids transporter small subunit 1) is a protein encoded by the SLC7A5 gene in human. SLC7A5 plays a role in neuronal cell proliferation, is involved in the uptake of methylmercury (MeHg) and plays a role in metal ion homeostasis and toxicity.

**Immunogen:** A synthetic peptide from the internal region of SLC7A5 of human origin.

**Tested applications:** ELISA, WB, IHC, IP

**Recommended dilutions:**

ELISA: 1:1000-1:5000

WB: 1:100-1:1000

IHC: 1:50-1:100

**Concentration:** 0.25 mg/ml

**Host:** rabbit

**Clonality:** Polyclonal

**Purity:** Purified from serum

**Format:** Liquid

**Storage buffer:**

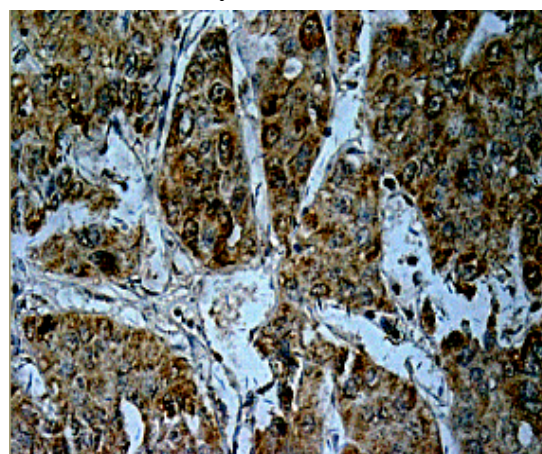
Preservative: no

Constituents: PBS (without Mg<sup>2+</sup> and Ca<sup>2+</sup>), pH 7.4, 150 mM NaCl, 50% glycerol

**Species Reactivity:** Anti- SLC7A5 antibody recognizes SLC7A5 of vertebrates.

**Storage Conditions:** Store at -20°C. Avoid freeze / thaw cycles

### Immunohistochemistry:



Immunohistochemical staining of formalin-fixed paraffin-embedded hepatocellular carcinoma using the anti-SLC7A5 pAb (Cat # 21118) with 1:50 dilution.

For research use only. Not for diagnostic or therapeutic applications.

24 Whitewoods Lane, Malvern, PA 19355

E-mail: [sale@neweastbio.com](mailto:sale@neweastbio.com)

Tel: (610) 945-2007 FAX: (610) 945-2008

Web: [www.neweastbio.com](http://www.neweastbio.com)