

Bag1

Catalog Number: 21231

Gene Symbol: BAG1

Description: Anti-Bag1 Rabbit Polyclonal Antibody

Background: BAG family molecular chaperone regulator 1 is a protein that in humans is encoded by the *BAG1* gene. It binds to oncogene BCL2, by which enhances the anti-apoptotic effects of BCL2 and represents a link between growth factor receptors and anti-apoptotic mechanisms. BAG gene has been implicated in age related neurodegenerative diseases as Alzheimer's. It has been demonstrated that BAG1 and BAG 3 regulate the proteasomal and lysosomal protein elimination pathways, respectively.

Immunogen: A synthetic peptide from the central region of Bag1 protein, human origin.

Tested applications: ELISA, WB, IHC

Recommended dilutions:

ELISA 1:500-1:5000

WB 1:200-1:2000

IHC 1:20-200

Concentration: 0.2 mg/ml

Host: Rabbit

Clonality: Polyclonal

Purity: Purified from serum

Format: Liquid

Storage buffer:

Preservative: no

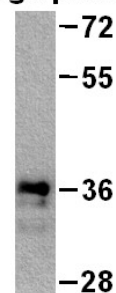
Constituents: PBS (without Mg^{2+} and Ca^{2+}), pH 7.4, 150 mM NaCl, 50% glycerol

Species Reactivity: Anti-Bag1 rabbit polyclonal antibody recognizes Bag1 from vertebrates..

Storage Conditions: Store at $-20^{\circ}C$. Avoid freeze / thaw cycles

Western blot:

Bag1 protein



WB: Anti-Bag1 pAb

Western blot analysis of recombinant Bag1 protein. Purified full length His-tagged Bag1 protein was blotted with anti-Bag1 rabbit polyclonal antibody (Cat. #21231).

For research use only. Not for diagnostic or therapeutic applications.