

B-Raf

Catalog Number: 21271

Gene Symbol: B-RAF, B-RAF1, RAFB1

Description: Anti-B-Raf Rabbit Polyclonal Antibody

Background: B-Raf is a member of the Raf family of Ser/Thr protein kinases. It functions downstream of Ras to regulate the MAP kinase signaling pathway. Mutations in the B-RAF gene cause diseases. Inherited mutations in B-RAF cause cardiofaciocutaneous syndrome. Acquired mutations in B-RAF have been found in cancers.

Immunogen: Purified B-Raf protein, human origin.

Tested applications: ELISA, WB, IHC

Recommended dilutions:

ELISA: 1:1000-1:5000

WB: 1:100-1:1000

IHC: 1:50-1:200

Concentration: 0.1mg/ml

Host: Rabbit

Clonality: Polyclonal

Purity: Purified from serum

Format: Liquid

Storage buffer:

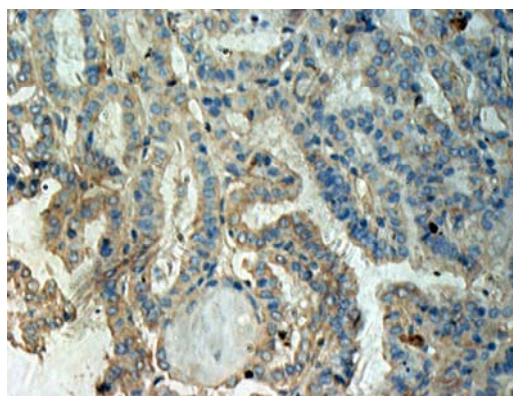
Preservative: no

Constituents: PBS (without Mg²⁺ and Ca²⁺), pH 7.4, 150 mM NaCl, 50% glycerol

Species Reactivity: Recognizes B-Raf of vertebrates.

Storage Conditions: Store at -20°C. Avoid freeze / thaw cycles

Immunohistochemistry:



Immunohistochemical analysis of paraffin-embedded human thyroid cancer tissue with anti- B-Raf polyclonal antibody (Cat. #21271). Tissue samples were fixed with formaldehyde and blocked with 1% serum for 15 min at 37 °C. Antigen retrieval was by heat mediation in citrate buffer (pH6). Samples were then incubated with primary antibody (1:50 dilution) overnight at 4°C. A HRP-conjugated Goat anti-mouse IgG (1:50 dilution) was used as secondary antibody.

For research use only. Not for diagnostic or therapeutic applications.

24 Whitewoods Lane, Malvern, PA 19355

E-mail: sale@neweastbio.com

Tel: (610) 945-2007 FAX: (610) 945-2008

Web: www.neweastbio.com