

β-catenin

Catalog Number: 21282

Gene Symbol: CTNNB1, CTNNB

Description: Anti-β-catenin Rabbit Polyclonal Antibody

Background: Beta-catenin (or β-catenin) is a protein that in humans is encoded by the *CTNNB1* gene. β-catenin is a subunit of the cadherin protein complex and also acts as an intracellular signal transducer in the Wnt signaling pathway. Deregulation of beta-catenin signaling is an important event in the genesis of a number of malignancies, such as colon cancer, melanoma, hepatocellular carcinoma, ovarian cancer, endometrial cancer, medulloblastoma pilomatricomas, and prostate cancer.

Immunogen: A synthetic peptide from the internal region of β-catenin.

Tested applications: ELISA, WB, IF, IHC

Recommended dilutions:

ELISA: 1:1000-1:5000

WB: 1:500-1:2000

IHC: 1:50-1:100

Concentration: 1 mg/ml

Host: Rabbit

Clonality: Polyclonal

Purity: Purified from serum

Format: Liquid

Storage buffer:

Preservative: no

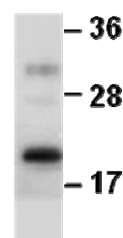
Constituents: PBS (without Mg²⁺ and Ca²⁺), pH 7.4, 150 mM NaCl, 50% glycerol

Species Reactivity: Recognizes β-catenin from vertebrates.

Storage Conditions: Store at -20°C. Avoid freeze / thaw cycles.

Western blot:

β-catenin protein

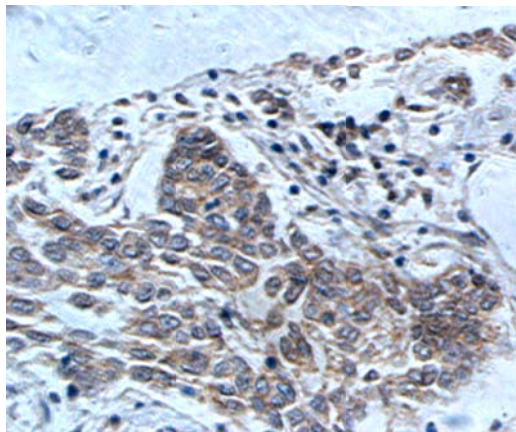


WB: Anti-β-Catenin pAb

Western blot analysis of recombinant β-catenin protein. Purified His-tagged β-catenin protein (amino acids 1-76) was blotted with anti-β-catenin rabbit polyclonal antibody (Cat. #21282).

For research use only. Not for diagnostic or therapeutic applications.

Immunohistochemistry:



Immunohistochemical analysis of paraffin-embedded human breast cancer tissue with anti-β-catenin polyclonal antibody (Cat. #21282). Tissue samples were fixed with formaldehyde and blocked with 1% serum for 15 min at 37 °C. Antigen retrieval was by heat mediation in citrate buffer (pH6). Samples were then incubated with primary antibody (1:50 dilution) overnight at 4°C. A HRP-conjugated Goat anti-mouse IgG (1:50 dilution) was used as secondary antibody.

For research use only. Not for diagnostic or therapeutic applications.

24 Whitewoods Lane, Malvern, PA 19355 Tel: (610) 945-2007 FAX: (610) 945-2008
E-mail: sale@neweastbio.com