

B - Raf (V600E)

Catalog Number: 26039

Gene Symbol: B - Raf (V600E)

Description: Anti- B - Raf (V600E) Mouse Monoclonal Antibody

Background: B- Raf is a member of the Raf family of Ser/Thr protein kinases. It functions downstream of Ras to regulate the MAP kinase signaling pathway. Mutations in the BRAF gene cause diseases. Inherited mutations in BRAF cause cardiofaciocutaneous syndrome. Acquired mutations in BRAF have been found in cancers

Immunogen: A synthetic peptide from the internal region of BRaf(V600E), human origin.

Tested applications: ELISA, WB, IHC , IP

Tested applications: ELISA, WB, IHC, IP

Recommended dilutions:

ELISA 1:100-1:3000

WB 1:200-1:1000

IHC 1:10-1:1000

Concentration: 0.5 mg/ml

Host: mouse

Clonality: Monoclonal

Isotype: IgG2b

Purity: Purified from ascites

Format: Liquid

Storage buffer:

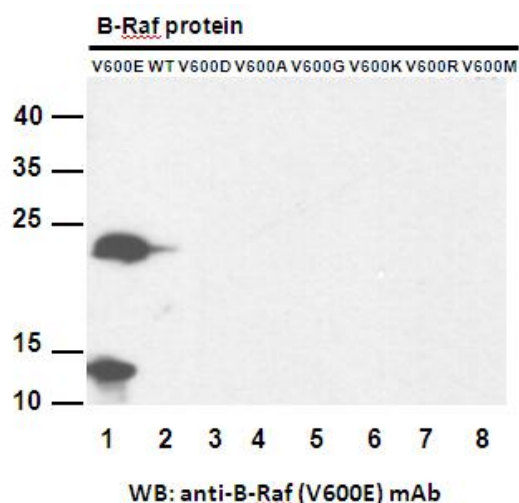
Preservative: no

Constituents: PBS (without Mg²⁺ and Ca²⁺), pH 7.4, 150 mM NaCl, **50% glycerol**

Species Reactivity: Recognizes B-Raf(V600E), but not wild type B-Raf proteins from vertebrates.

Storage Conditions: Store at -20°C. Avoid freeze / thaw cycles

Western blot:



Western blot analysis of recombinant B-raf proteins with anti-BRaf(V600E) antibody.

Purified His - tagged B-Raf(V600E)

(amino acids 513-693)(lane1) ,

corresponding wild type protein(lane 2),

His - tagged B-Raf(V600D) (lane 3) ,

His - tagged B-Raf(V600A) (lane 4) ,

His - tagged B-Raf(V600G) (lane 5) ,

His - tagged B-Raf(V600K) (lane 6),

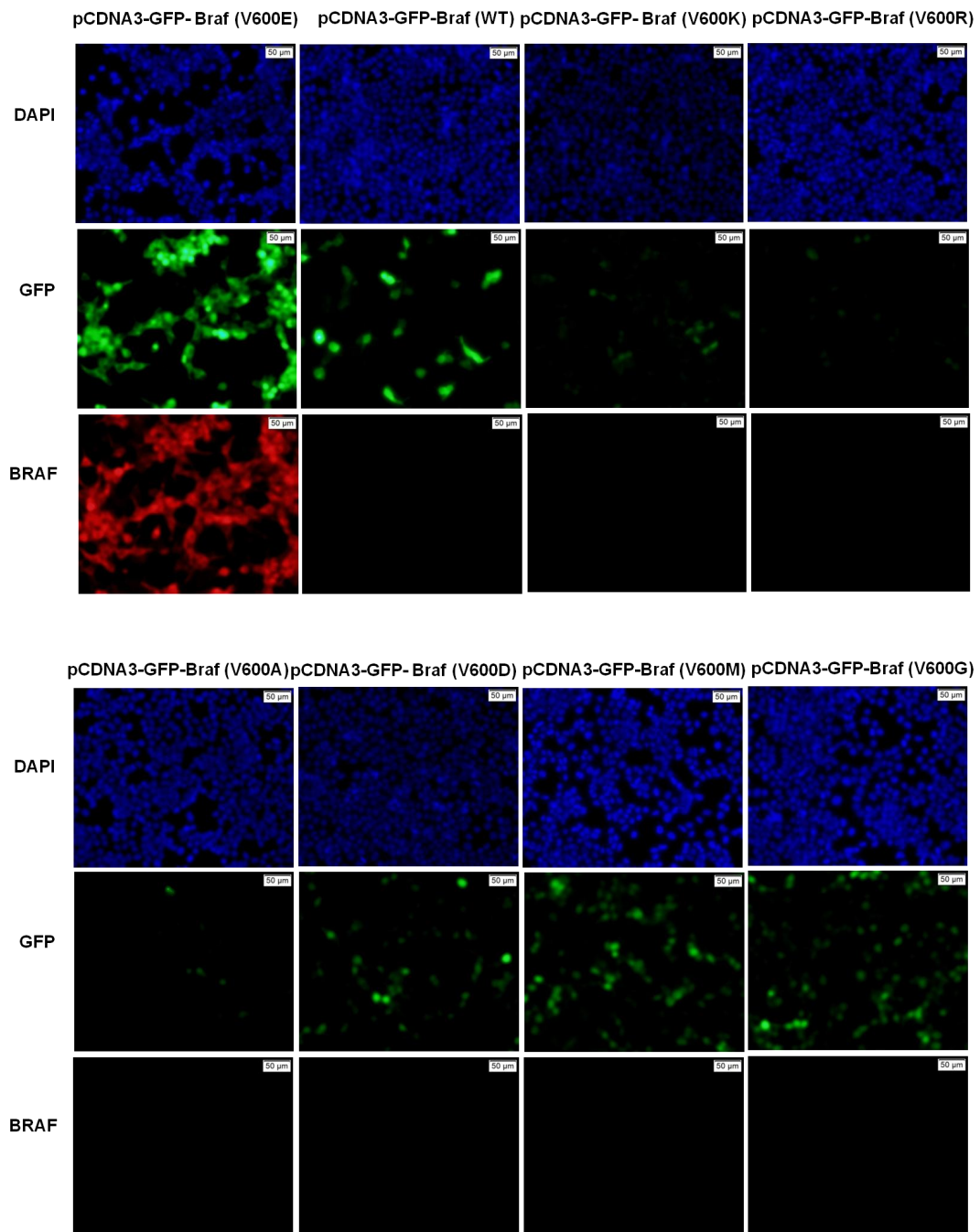
His - tagged B-Raf(V600R) (lane 7), and

His - tagged B-Raf(V600M) (lane 8)

were blotted with anti-B-Raf(V600E) monoclonal antibody (Cat # 26039) .

For research use only. Not for diagnostic or therapeutic applications.

Immunofluorescence:



Immunofluorescence of cell expressing BRAf protein with anti-BRaf(V600E) antibody . HEK293T cells were transfected with pCDNA3-GFP- B-Raf(V600E)plasmid,pCDNA3-GFP- B-Raf(WT)plasmid, pCDNA3-GFP- B-Raf(V600K)plasmid,pCDNA3-GFP- B-Raf(V600R)plasmid, pCDNA3-GFP- B-Raf(V600A)plasmid,pCDNA3-GFP- B-Raf(V600D) plasmid, pCDNA3-GFP-B-Raf(V600M)plasmid, or pCDNA3-GFP-B-Raf(V600G)plasmid, then fixed and stained with anti-B-Raf(V600E) monoclonal antibody (Cat. # 26039).