

## ALK (R1275Q)

**Catalog Number:** 26151

**Gene Symbol:** ALK, CD246, NBLST3

**Description:** Anti-ALK (R1275Q) Mouse Monoclonal Antibody

**Background:** Anaplastic lymphoma kinase (ALK) also known as CD246 (cluster of differentiation 246) is a tyrosine kinase receptor that plays an important role in the development of the brain and nervous systems. Deficiencies in ALK, which most commonly as a fusion with other genes, are indicated in cancers.

**Immunogen:** A synthetic peptide from the internal region of ALK which includes the mutation of R1275Q, human origin.

**Tested applications:** ELISA, WB, IHC

**Recommended dilutions:**

ELISA: 1:1000-1:5000

WB: 1:100-1:1000

IHC: 1:50-1:100

**Concentration:** 0.5 mg/ml

**Host:** Mouse

**Clonality:** Monoclonal

**Purity:** Purified from ascites

**Format:** Liquid

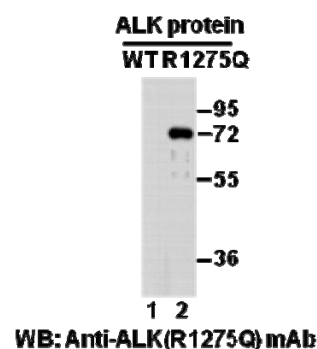
**Preservative:** no

**Constituents:** PBS (without Mg<sup>2+</sup> and Ca<sup>2+</sup>), pH 7.4, 150 mM NaCl, 50% glycerol

**Species Reactivity:** Recognizes ALK (R1275Q), but not wild type ALK protein from vertebrates.

**Storage Conditions:** Store at -20°C. Avoid freeze / thaw cycles.

### Western blot:



**Western blot analysis of recombinant ALK (R1275Q) and wildtype proteins.** Purified His-tagged ALK (R1275Q) protein (amino acids 1060-1620, lane 2) and corresponding wild type protein (lane 1) were blotted with anti-ALK (R1275Q) mouse monoclonal antibody (Cat. #26151).

For research use only. Not for diagnostic or therapeutic applications.