

Abl (Y253H)

Catalog Number: 26154

Gene Symbol: ABL1; ABL; JTK7; bcr-abl; c-ABL; p150; v-abl

Description: Anti-Abl (Y253H) Mouse Monoclonal Antibody

Background: V-abl Abelson murine leukemia viral oncogene homolog 1 also known as ABL1, is a cytoplasmic and nuclear protein tyrosine kinase that has been implicated in processes of cell differentiation, cell division, cell adhesion, stress response and cell migration. Deficient in Abl can cause severe disease such as leukemia.

Immunogen: A synthetic peptide from the internal region of Abl which includes the mutation of Y253H, human origin.

Tested applications: ELISA, WB, IHC, IF

Recommended dilutions:

ELISA: 1:1000-1:5000

WB: 1:100-1:1000

IHC: 1:50-1:100

IHC: 1:50-1:100

Concentration: 1 mg/ml

Host: Mouse

Clonality: Monoclonal

Purity: Purified from ascites

Format: Liquid

Storage buffer:

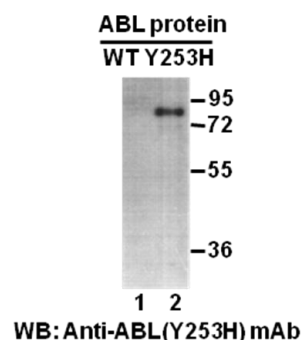
Preservative: no

Constituents: PBS (without Mg²⁺ and Ca²⁺), pH 7.4, 150 mM NaCl, 50% glycerol

Species Reactivity: recognizes Abl Y253H, but not wildtype of vertebrates.

Storage Conditions: Store at -20°C. Avoid freeze / thaw cycles.

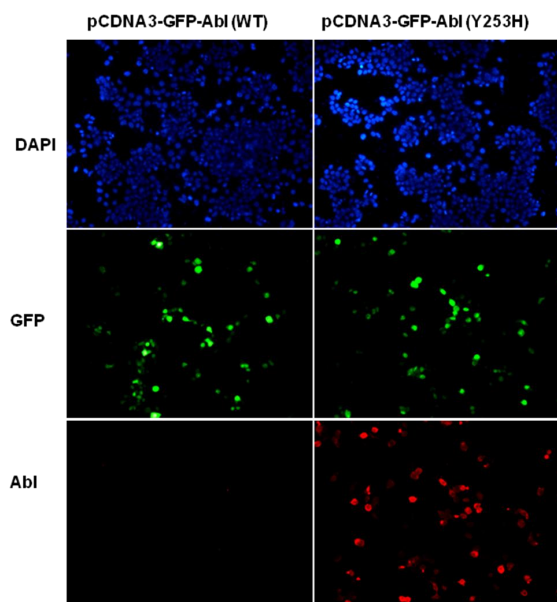
Western blot:



Western blot analysis of recombinant Abl (Y253H) and wildtype proteins. Purified His-tagged Abl (Y253H) protein (amino acids 1-76, lane 2) and corresponding wild type protein (lane 1) were blotted with anti-Abl (Y253H) mouse monoclonal antibody (Cat. #26154).

For research use only. Not for diagnostic or therapeutic applications.

Immunofluorescence:



Immunofluorescence of cells expressing Abl proteins with anti-Abl (Y253H) antibody.

HEK293T cells were transfected with pCDNA3-GFP-Abl (WT) plasmid (left column) or pCDNA3-GFP-Abl (Y253H) plasmid (right column), then fixed and stained with anti-Abl (Y253H) monoclonal antibody (Cat. #26154).

For research use only. Not for diagnostic or therapeutic applications.

24 Whitewoods Lane, Malvern, PA 19355 Tel: (610) 945-2007 FAX: (610) 945-2008
E-mail: sale@neweastbio.com Web: www.neweastbio.com