

## $\beta$ -catenin (G48D)

**Catalog Number:** 26166

**Gene Symbol:** CTNNB1, CTNNB

**Description:** Anti- $\beta$ -catenin (G48D) Mouse Monoclonal Antibody

**Background:** Beta-catenin (or  $\beta$ -catenin) is a protein that in humans is encoded by the *CTNNB1* gene.  $\beta$ -catenin is a subunit of the cadherin protein complex and also acts as an intracellular signal transducer in the Wnt signaling pathway. Deregulation of beta-catenin signaling is an important event in the genesis of a number of malignancies, such as colon cancer, melanoma, hepatocellular carcinoma, ovarian cancer, endometrial cancer, medulloblastoma pilomatricomas, and prostate cancer.

**Immunogen:** A synthetic peptide from the internal region of  $\beta$ -catenin which includes the mutation of G48D, human origin.

**Tested applications:** ELISA, WB, IF, IHC

**Recommended dilutions:**

ELISA: 1:1000-1:5000

WB: 1:500-1:2000

IHC: 1:50-1:100

**Concentration:** 1 mg/ml

**Host:** Mouse

**Clonality:** Monoclonal

**Purity:** Purified from ascites

**Format:** Liquid

**Storage buffer:**

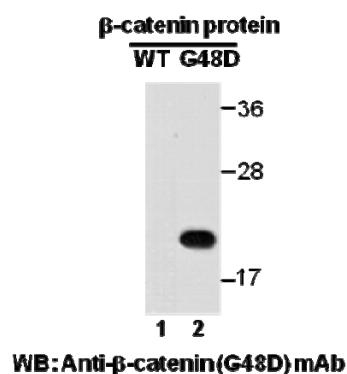
Preservative: no

Constituents: PBS (without  $Mg^{2+}$  and  $Ca^{2+}$ ), pH 7.4, 150 mM NaCl, 50% glycerol

**Species Reactivity:** Recognizes  $\beta$ -catenin (G48D), but not wild type  $\beta$ -catenin protein from vertebrates.

**Storage Conditions:** Store at  $-20^{\circ}C$ . Avoid freeze / thaw cycles.

**Western blot:**

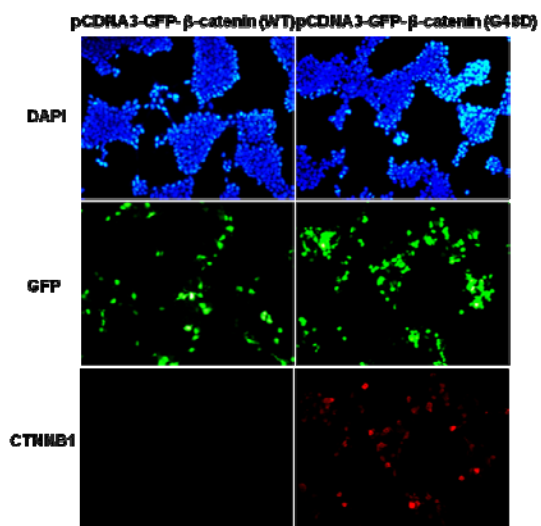


**Western blot analysis of recombinant  $\beta$ -catenin (G48D) and wildtype proteins.**

Purified His-tagged  $\beta$ -catenin (G48D) protein (amino acids 1-76, lane 2) and corresponding wild type protein (lane 1) were blotted with anti- $\beta$ -catenin (G48D) mouse monoclonal antibody (Cat. #26166).

For research use only. Not for diagnostic or therapeutic applications.

## Immunofluorescence:



**Immunofluorescence of cells expressing  $\beta$ -catenin proteins with anti-  $\beta$ -catenin (G48D) antibody.** HEK293T cells were transfected with pCDNA3-GFP- $\beta$ -catenin (WT) plasmid (left column) or pCDNA3-GFP- $\beta$ -catenin (G48D) plasmid (right column), then fixed and stained with anti-  $\beta$ -catenin (G48D) monoclonal antibody (Cat. #26166).

For research use only. Not for diagnostic or therapeutic applications.

24 Whitewoods Lane, Malvern, PA 19355 Tel: (610) 945-2007 FAX: (610) 945-2008  
E-mail: [sale@neweastbio.com](mailto:sale@neweastbio.com)