

B-Raf (V600R)

Catalog Number: 26182

Gene Symbol: BRAF, BRAF1, RAFB1

Description: Anti-B-Raf (V600R) Mouse Monoclonal Antibody

Background: B-Raf is a member of the Raf family of Ser/Thr protein kinases. It functions downstream of Ras to regulate the MAP kinase signaling pathway. Mutations in the BRAF gene cause diseases. Inherited mutations in BRAF cause cardiofaciocutaneous syndrome. Acquired mutations in BRAF have been found in cancers.

Immunogen: A synthetic peptide from the internal region of B-Raf (V600R), human origin.

Tested applications: ELISA, WB, IHC

Recommended dilutions:

ELISA 1:1000-1:5000

WB 1:500-1:1500

IHC 1:100-1:200

Concentration: 0.9 mg/ml

Host: Mouse

Clonality: Monoclonal

Isotype: Unknown

Purity: Purified from ascites

Format: Liquid

Storage buffer:

Preservative: no

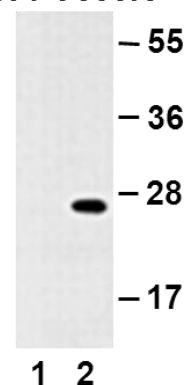
Constituents: PBS (without Mg²⁺ and Ca²⁺), pH 7.4, 150 mM NaCl, 50% glycerol

Species Reactivity: Recognizes B-Raf V600R, but not wild-type B-Raf proteins.

Storage Conditions: Store at -20°C. Avoid freeze / thaw cycles.

Western blot:

BRAF protein
WT V600R



WB: Anti-B-Raf (V600R) mAb

Western blot analysis of recombinant B-raf proteins. Purified His-tagged B-Raf (V600R) protein (lane 2) and corresponding wild type protein (lane 1) were blotted with anti-B-Raf (V600R) monoclonal antibody (Cat. # 26182).

For research use only. Not for diagnostic or therapeutic applications.