

## B-Raf (V600D)

**Catalog Number:** 26184

**Gene Symbol:** BRAF, BRAF1, RAFB1

**Description:** Anti-B-Raf (V600D) Mouse Monoclonal Antibody

**Background:** B-Raf is a member of the Raf family of Ser/Thr protein kinases. It functions downstream of Ras to regulate the MAP kinase signaling pathway. Mutations in the BRAF gene cause diseases. Inherited mutations in BRAF cause cardiofaciocutaneous syndrome. Acquired mutations in BRAF have been found in cancers.

**Immunogen:** A synthetic peptide from the internal region of B-Raf (V600D), human origin.

**Tested applications:** ELISA, WB, IF, IHC

**Recommended dilutions:**

ELISA 1:1000-1:5000

WB 1:500-1:2000

IHC 1:100-1:200

**Concentration:** 0.5 mg/ml

**Host:** Mouse

**Clonality:** Monoclonal

**Isotype:** IgG

**Purity:** Purified from ascites

**Format:** Liquid

**Storage buffer:**

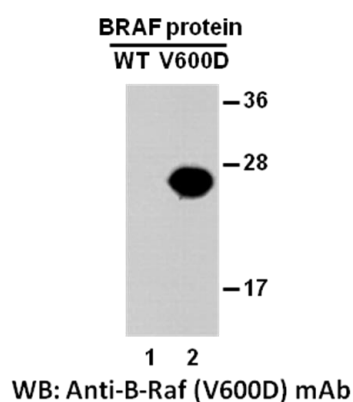
Preservative: no

Constituents: PBS (without Mg<sup>2+</sup> and Ca<sup>2+</sup>), pH 7.4, 150 mM NaCl, 50% glycerol

**Species Reactivity:** Recognizes B-Raf V600D, but not wild-type B-Raf proteins from vertebrates.

**Storage Conditions:** Store at -20°C. Avoid freeze / thaw cycles.

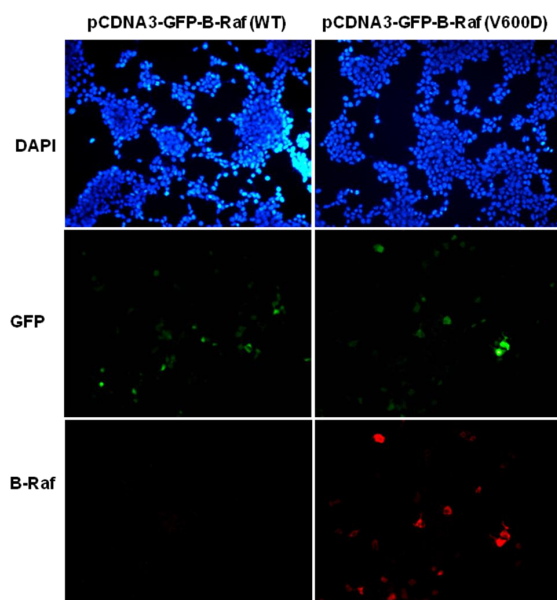
### Western blot:



**Western blot analysis of recombinant B-raf proteins.** Purified His-tagged B-Raf (V600D) protein (amino acids 513-693, lane 2) and corresponding wild type protein (lane 1) were blotted with anti-B-Raf (V600D) monoclonal antibody (Cat. # 26184).

**For research use only. Not for diagnostic or therapeutic applications.**

## Immunofluorescence:



### Immunofluorescence of cells expressing B-Raf proteins with anti-B-Raf (V600D) antibody.

HEK293T cells were transfected with pCDNA3-GFP-B-Raf (WT) plasmid (left column) or pCDNA3-GFP-B-Raf (V600D) plasmid (right column), then fixed and stained with anti-B-Raf (V600D) monoclonal antibody (Cat. #26184).

For research use only. Not for diagnostic or therapeutic applications.