

CTCF (K344E)

Catalog Number: 26324

Gene Symbol: CTCF; MRD21

Description: Anti-CTCF (K344E) Mouse Monoclonal Antibody

Background: Transcriptional repressor

CTCF also known as 11-zinc finger protein or CCCTC-binding factor is a transcription factor that in humans is encoded by the CTCF gene. CTCF is involved in many cellular processes, including transcriptional regulation, insulator activity, recombination and regulation of chromatin architecture.

Immunogen: A synthetic peptide from the internal region of CTCF which includes the mutation of K344E, human origin.

Tested applications: ELISA, WB, IHC

Recommended dilutions:

ELISA: 1:1000-1:5000

WB: 1:500-1:1000

IHC: 1:50-1:100

Concentration: 1 mg/ml

Host: Mouse

Clonality: Monoclonal

Purity: Purified from ascites

Format: Liquid

Storage buffer:

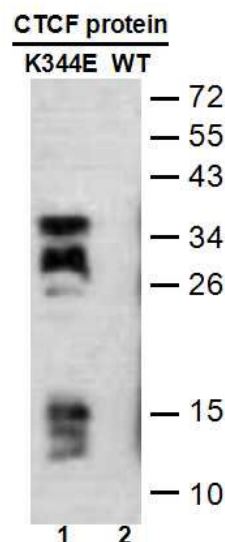
Preservative: no

Constituents: PBS (without Mg²⁺ and Ca²⁺), pH 7.4, 150 mM NaCl, 50% glycerol

Species Reactivity: Recognizes K344E mutant, but not wild-type CTCF of vertebrates.

Storage Conditions: Store at -20°C. Avoid freeze / thaw cycles.

Western blot:

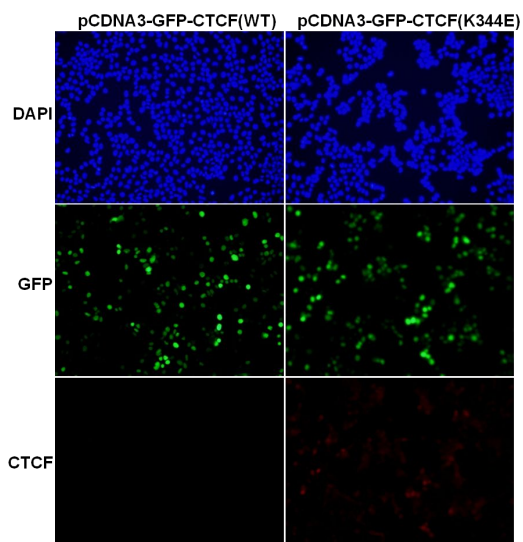


WB: anti-CTCF (K344E) mAb

Western blot analysis of recombinant CTCF (K344E) and wild-type proteins.

Purified His-tagged CTCF (K344E) protein (lane 1) and corresponding wild-type protein (lane 2) were blotted with anti-CTCF (K344E) monoclonal antibody (Cat. #26324).

For research use only. Not for diagnostic or therapeutic applications.

Immunofluorescence:**Immunofluorescence of cells expressing CTCF proteins with anti-CTCF (K344E) antibody.**

HEK293T cells were transfected with pCDNA3-GFP-CTCF (WT) plasmid (left column) or pCDNA3-GFP-CTCF (K344E) plasmid (right column), then fixed and stained with anti-CTCF (K344E) monoclonal antibody (Cat. #26324).

For research use only. Not for diagnostic or therapeutic applications.

24 Whitewoods Lane, Malvern, PA 19355 Tel: (610) 945-2007 FAX: (610) 945-2008
E-mail: sale@neweastbio.com Web: www.neweastbio.com