

BRCA1 (1720-1863)

Catalog Number: 26351-2

Gene Symbol: BRCA1, BRCC1, IRIS, PNCA4, PPP1R53, PSCP

Description: Anti-BRCA1 (1720-1863) Mouse Monoclonal Antibody

Background: BRCA1 is normally expressed in cells of breast and other tissues, where it helps repair damaged DNA or destroy cells if DNA cannot be repaired. It is involved in the repair of chromosomal damage with an important role in the error-free repair of DNA double-strand breaks. If BRCA1 itself is damaged by a BRCA1 mutation, damaged DNA is not repaired properly, and this increases the risk for breast cancer.

Immunogen: Purified BRCA1 (1720-1863) protein, human origin.

Tested applications: ELISA, WB, IHC

Recommended dilutions:

ELISA: 1:1000-1:2000

WB: 1:500-1:1000

IHC: 1:50-1:100

Concentration: 1 mg/ml

Host: Mouse

Clonality: Monoclonal

Purity: Purified from ascites

Format: Liquid

Storage buffer:

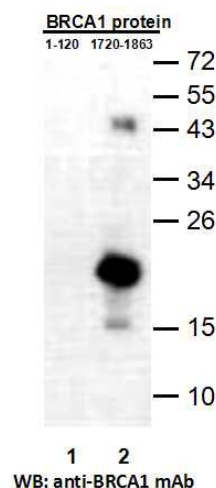
Preservative: no

Constituents: PBS (without Mg²⁺ and Ca²⁺), pH 7.4, 150 mM NaCl, 50% glycerol

Species Reactivity: Recognizes BRCA1(1720-1863) of vertebrates.

Storage Conditions: Store at -20°C. Avoid freeze / thaw cycles.

Western blot:

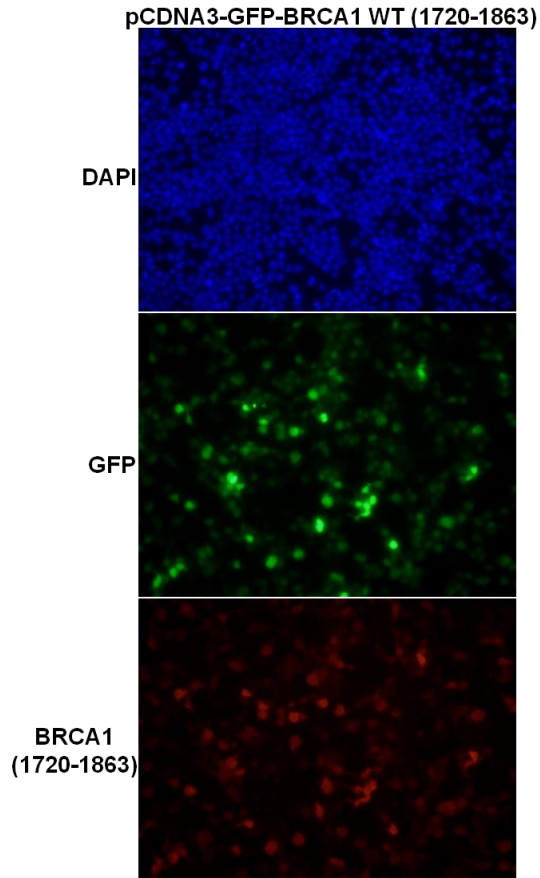


Western blot analysis of recombinant BRCA1 (1-120) and BRCA1 (1720-1863) proteins.

Purified His-tagged BRCA1 (1-120) protein (lane1) and corresponding His-tagged BRCA1 (1720-1831) (lane2) were blotted with anti-BRCA1 (1720-1863) monoclonal antibody (Cat. #26351-2).

For research use only. Not for diagnostic or therapeutic applications.

Immunofluorescence:



Immunofluorescence of cells expressing BRCA1 (1720-1863) protein with anti-BRCA1 (1720-1863) antibody. HEK293T cells was transfected with pCDNA3-GFP-BRCA1 (1720-1863) plasmid, then fixed and stained with anti-BRCA1 (1720-1863) monoclonal antibody (Cat. #26351-2).

For research use only. Not for diagnostic or therapeutic applications.

24 Whitewoods Lane, Malvern, PA 19355 Tel: (610) 945-2007 FAX: (610) 945-2008
E-mail: sale@neweastbio.com Web: www.neweastbio.com