

## CASP8

**Catalog Number:** 26352

**Gene Symbol:** CASP8; ALPS2B; CAP4; MACH; FLICE

**Description:** Anti-CASP8 Mouse Monoclonal Antibody

**Background:** The CASP8 gene encodes a member of the cysteine-aspartic acid protease (caspase) family. Sequential activation of caspases plays a central role in the execution-phase of cell apoptosis. A very rare genetic disorder of the immune system can also be caused by mutations in this gene.

**Immunogen:** Purified CASP8 protein, human origin.

**Tested applications:** ELISA, WB, IHC

**Recommended dilutions:**

ELISA: 1:1000-1:2000

WB: 1:500-1:1000

IHC: 1:50-1:100

**Concentration:** 1 mg/ml

**Host:** Mouse

**Clonality:** Monoclonal

**Purity:** Purified from ascites

**Format:** Liquid

**Storage buffer:**

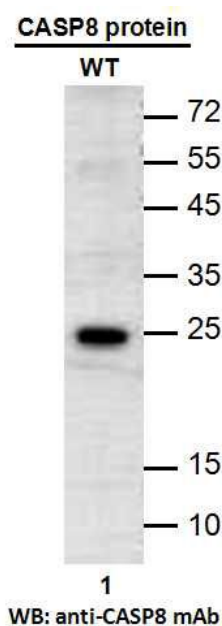
Preservative: no

Constituents: PBS (without Mg<sup>2+</sup> and Ca<sup>2+</sup>), pH 7.4, 150 mM NaCl, 50% glycerol

**Species Reactivity:** Recognizes CASP8 of vertebrates.

**Storage Conditions:** Store at -20°C. Avoid freeze / thaw cycles.

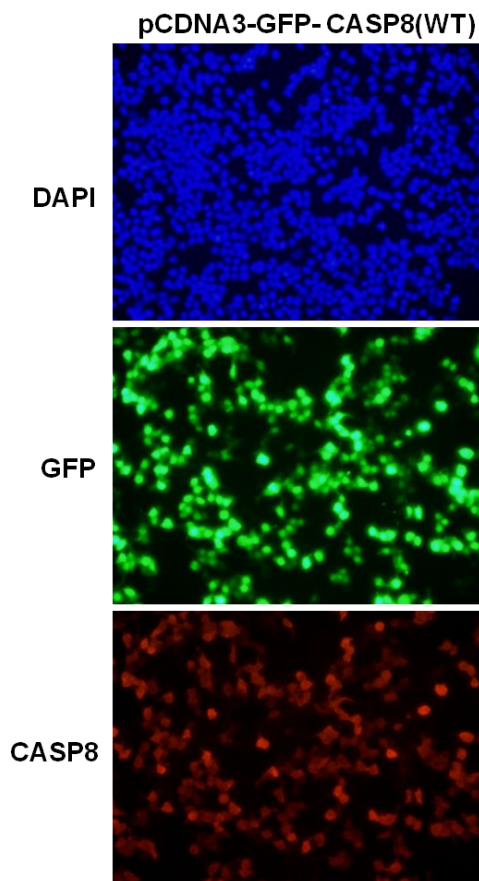
**Western blot:**



**Western blot analysis of recombinant CASP8 proteins.** Purified His-tagged CASP8 protein (268-435aa, 25KD) was blotted with anti-CASP8 monoclonal antibody (Cat. #26352).

For research use only. Not for diagnostic or therapeutic applications.

## Immunofluorescence:



### Immunofluorescence of cells expressing CASP8 proteins with anti-CASP8 antibody.

HEK293T cells were transfected with pCDNA3-GFP-CASP8 (WT) plasmid, then fixed and stained with anti-CASP8 monoclonal antibody (Cat. #26352).

---

For research use only. Not for diagnostic or therapeutic applications.

24 Whitewoods Lane, Malvern, PA 19355 Tel: (610) 945-2007 FAX: (610) 945-2008  
E-mail: [sale@neweastbio.com](mailto:sale@neweastbio.com) Web: [www.neweastbio.com](http://www.neweastbio.com)