

## CTCF

**Catalog Number:** 26354

**Gene Symbol:** CTCF; MRD21

**Description:** Anti-CTCF Mouse Monoclonal Antibody

**Background:** Transcriptional repressor

CTCF also known as 11-zinc finger protein or CCCTC-binding factor is a transcription factor that in humans is encoded by the CTCF gene. CTCF is involved in many cellular processes, including transcriptional regulation, insulator activity, recombination and regulation of chromatin architecture.

**Immunogen:** A synthetic peptide from the internal region of CTCF protein, human origin.

**Tested applications:** ELISA, WB, IHC

**Recommended dilutions:**

ELISA: 1:1000-1:5000

WB: 1:500-1:1000

IHC: 1:50-1:100

**Concentration:** 0.5 mg/ml

**Host:** Mouse

**Clonality:** Monoclonal

**Purity:** Purified from ascites

**Format:** Liquid

**Storage buffer:**

Preservative: no

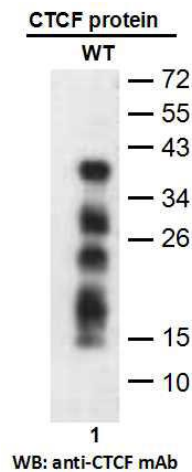
Constituents: PBS (without Mg<sup>2+</sup> and Ca<sup>2+</sup>), pH

7.4, 150 mM NaCl, 50% glycerol

**Species Reactivity:** Recognizes CTCF of vertebrates.

**Storage Conditions:** Store at -20°C. Avoid freeze / thaw cycles.

**Western blot:**

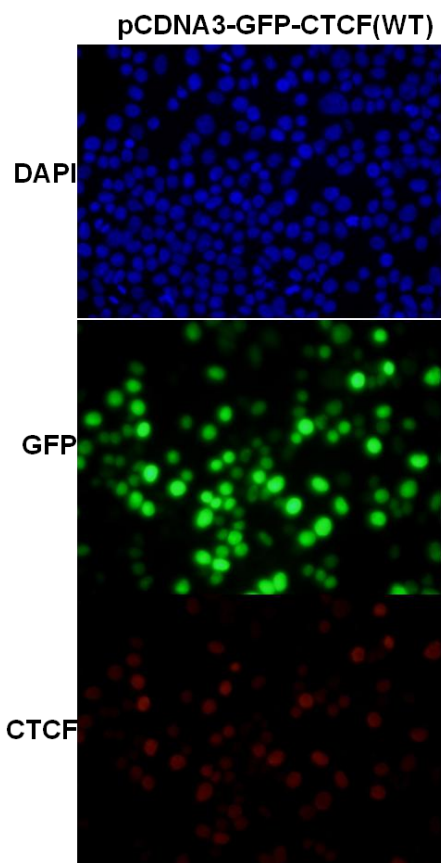


**Western blot analysis of recombinant CTCF proteins.**

Purified His-tagged CTCF protein (lane 1) was blotted with anti-CTCF monoclonal antibody (Cat. #26354).

For research use only. Not for diagnostic or therapeutic applications.

## Immunofluorescence:



**Immunofluorescence of cells expressing CTFCF protein with anti-CTFCF antibody.** HEK293T cells was transfected with pCDNA3-GFP-CTFCF plasmid, then fixed and stained with anti-CTFCF monoclonal antibody (Cat. #26354).

---

For research use only. Not for diagnostic or therapeutic applications.

24 Whitewoods Lane, Malvern, PA 19355 Tel: (610) 945-2007 FAX: (610) 945-2008  
E-mail: [sale@neweastbio.com](mailto:sale@neweastbio.com) Web: [www.neweastbio.com](http://www.neweastbio.com)