

**BRCA2 (1475-1748)****Catalog Number:** 26364-2**Gene Symbol:** BRCA2, BRCC2, FAD1, FCD, BROVCA2, PNCA2**Description:** Anti-BRCA2 (1475-1748) Mouse Monoclonal Antibody

**Background:** BRCA2 is a human tumor suppressor gene. Its protein, also called by the synonym breast cancer type 2 susceptibility protein, is responsible for repairing DNA. Mutations of BRCA2 can cause an increased risk of breast cancer. In addition to breast cancer in men and women, mutations in BRCA2 also lead to an increased risk of ovarian, Fallopian tube, prostate, and pancreatic cancers, as well as malignant melanoma.

**Immunogen:** Purified BRCA2 (1475-1748) protein, human origin.

**Tested applications:** ELISA, WB, IHC

**Recommended dilutions:**

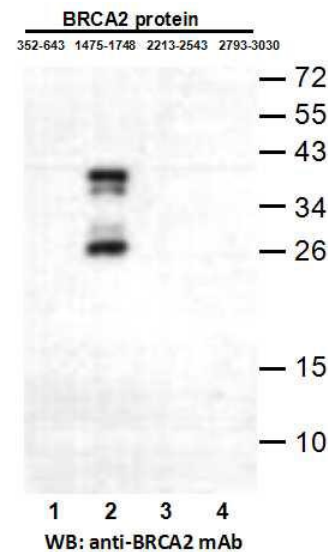
ELISA: 1:1000-1:2000

WB: 1:500-1:1000

IHC: 1:50-1:100

**Concentration:** 1 mg/ml**Host:** Mouse**Clonality:** Monoclonal**Purity:** Purified from ascites**Format:** Liquid**Storage buffer:**

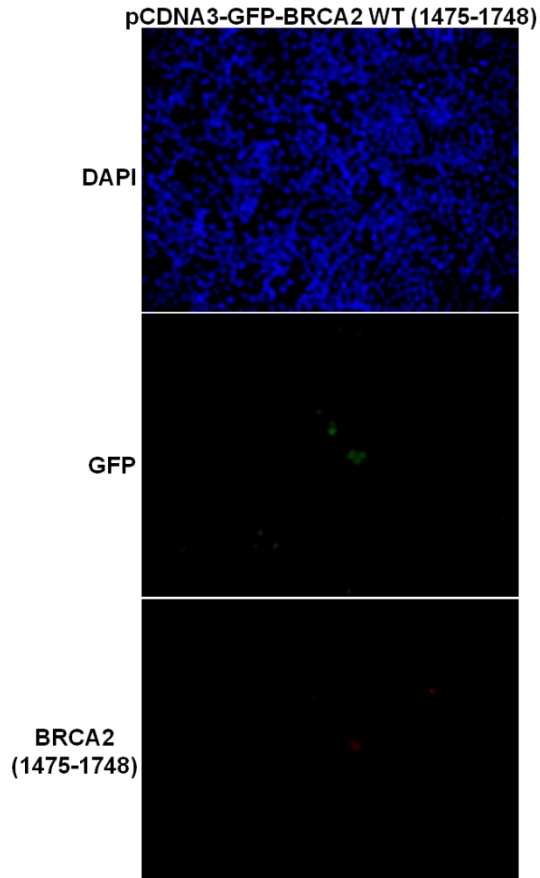
Preservative: no

Constituents: PBS (without Mg<sup>2+</sup> and Ca<sup>2+</sup>), pH 7.4, 150 mM NaCl, 50% glycerol**Species Reactivity:** Recognizes BRCA2(1475-1748) of vertebrates.**Storage Conditions:** Store at -20°C. Avoid freeze / thaw cycles.**Western blot:**

**Western blot analysis of recombinant BRCA2 proteins.** Purified His-tagged BRCA2 (352-643) protein (lane1), His-tagged BRCA2 (1475-1748) protein(lane2), His-tagged BRCA2 (2213-2543) protein(lane3) and His-tagged BRCA2 (2793-3030) protein (lane4) were blotted with anti-BRCA2 (1475-1748) monoclonal antibody (Cat. #26364-2).

For research use only. Not for diagnostic or therapeutic applications.

## Immunofluorescence:



**Immunofluorescence of cells expressing BRCA2 (1475-1748) protein with anti-BRCA2 (1475-1748) antibody.** HEK293T cells was transfected with pCDNA3-GFP-BRCA2 (1475-1748) plasmid, then fixed and stained with anti-BRCA2 (1475-1748) monoclonal antibody (Cat. #26364-2).

---

For research use only. Not for diagnostic or therapeutic applications.

24 Whitewoods Lane, Malvern, PA 19355 Tel: (610) 945-2007 FAX: (610) 945-2008  
E-mail: [sale@neweastbio.com](mailto:sale@neweastbio.com) Web: [www.neweastbio.com](http://www.neweastbio.com)