



—A helping hand for your research

Product Manual

**Configuration-specific Monoclonal Antibody Based
Arf6 Activation Assay Kit**

Catalog Number: 82401

20 assays

Table of Content

Product Description	3
Assay Principle	3
Kit Components	3
Storage	4
Materials Needed but Not Supplied	4
Reagent Preparation	4
Sample Preparation	5
Assay Procedure	6
Example of Results	8

**FOR RESEARCH USE ONLY.
NOT FOR USE IN DIAGNOSTIC PROCEDURES**

**NewEast Biosciences
24 Whitewoods Lane
Malvern , PA 19355**

2

***FAX: 610-945-2008
Phone: 610-945-2007
Web: www.neweastbio.com
E-mail: sale@neweastbio.com***

Product Description

ARF6 (ADP-ribosylation factor 6) is a member of the ARF super-family. ARF genes encode small GTPases that increase the ADP-ribosyltransferase activity of cholera toxin and are critical for vesicular trafficking as activators of phospholipase D. Arf6 regulates membrane trafficking and functions as a regulatory molecule of phagocytosis.

Currently there is no direct assay to measure the activation of Arf 6 GTPase.

NewEast Biosciences Arf6 Activation Assay Kit is based on the configuration-specific monoclonal antibody that specifically recognizes Arf6-GTP, but not Arf6-GDP, and an Arf6 specific rabbit polyclonal antibody. Given the high affinity of monoclonal antibodies to their antigens, the activation assay could be performed in a short time. This assay provides the reliable results with consistent reproducibility.

These anti-Arf 6-GTP monoclonal antibodies can also be used to monitor the activation of Arf 6 in cells and in tissues by immunohistochemistry.

NewEast Biosciences Arf6 Activation Assay Kit provides a simple and fast method to monitor the activation of Arf 6. Each kit provides sufficient quantities to perform 20 assays.

Assay Principle

NewEast Biosciences Arf 6 Activation Assay Kit bases on the configuration-specific anti-Arf 6-GTP monoclonal antibody to measure the active Arf 6-GTP levels, either from cell extracts or from in vitro GTP γ S loading Arf 6 activation assays. Briefly, anti-active Arf 6 mouse monoclonal antibody will be incubated with cell lysates containing Arf 6-GTP. The bound active Arf 6 will then be pulled down by protein A/G agarose. The precipitated active Arf 6 will be detected by immunoblot analysis using an anti-Arf 6 rabbit polyclonal antibody, respectively.

Kit Components

1. Anti-active Arf 6, Mouse Monoclonal Antibody (Catalog No. 26918): One vial – 22 μ L (1 mg/ml) in PBS, pH 7.4, containing 50% glycerol and 0.05% sodium azide. This antibody specifically recognizes Arf 6-GTP from all vertebrates.
2. Protein A/G Agarose (Catalog No. 30301): One vial – 400 μ L of 50% slurry.

NewEast Biosciences
24 Whitewoods Lane
Malvern , PA 19355

3

FAX: 610-945-2008
Phone: 610-945-2007
Web: www.neweastbio.com
E-mail: sale@neweastbio.com

3. 5X Assay/Lysis Buffer (Catalog No. 30303): One bottle – 30 mL of 250 mM Tris-HCl, pH 8, 750 mM NaCl, 50 mM MgCl₂, 5 mM EDTA, 5% Triton X-100.
4. Anti- Arf 6, Rabbit Polyclonal Antibody (Catalog No. 21032): One vial – 100 µL (1 mg/ml) in PBS, pH 7.4, contained 50% glycerol.
5. 100 X GTP_γS (Catalog No. 30302): One vial –100 µl at 10 mM, use 5 µL of GTP_γS for GTP-labeling of 0.5 mL of cell lysate.
6. 100 X GDP (Catalog No. 30304): One vial –100 µl at 100 mM, use 5 µL of GDP for GDP-labeling of 0.5 mL of cell lysate.

Storage

Store all kit components at 4°C until their expiration dates.

Materials Needed but Not Supplied

1. Stimulated and non-stimulated cell lysates
2. Protease inhibitors
3. 4 °C tube rocker or shaker
4. 0.5 M EDTA, pH8.0
5. 1 M MgCl₂
6. 2X reducing SDS-PAGE sample buffer
7. Electrophoresis and immunoblotting systems
8. Immunoblotting wash buffer such as TBST (10 mM Tris-HCl, pH 7.4, 0.15 M NaCl, 0.05% Tween-20)
9. Immunoblotting blocking buffer (TBST containing 5% Non-fat Dry Milk or 3% BSA)
10. PVDF or nitrocellulose membrane
11. Secondary Antibody
12. ECL Detection Reagents

Reagent Preparation

- 1X Assay/Lysis Buffer: Mix the 5X Stock briefly and dilute to 1X in deionized water. Just prior to usage, add protease inhibitors such as 1 mM PMSF, 10 µg/mL leupeptin, and 10 µg/mL aprotinin.

NewEast Biosciences
24 Whitewoods Lane
Malvern , PA 19355

4

FAX: 610-945-2008
Phone: 610-945-2007
Web: www.neweastbio.com
E-mail: sale@neweastbio.com

Sample Preparation

Adherent Cells

1. Culture cells (one 10-cm plate, $\sim 10^7$ cells) to approximately 80-90% confluence. Stimulate cells with activator or inhibitor as desired.
2. Aspirate the culture media and wash twice with ice-cold PBS.
3. Completely remove the final PBS wash and add ice-cold 1X Assay/Lysis Buffer to the cells (0.5 - 1 mL per 10 cm tissue culture plate).
4. Place the culture plates on ice for 10-20 minutes.
5. Detach the cells from the plates by scraping with a cell scraper.
6. Transfer the lysates to appropriate size tubes and place on ice.
7. If nuclear lysis occurs, the cell lysates may become very viscous and difficult to pipette. If this occurs, lysates can be passed through a 27½-gauge syringe needle 3-4 times to shear the genomic DNA.
8. Clear the lysates by centrifugation for 10 minutes (12,000 x g at 4 °C).
9. Collect the supernatant and store samples ($\sim 1-2$ mg of total proteins) on ice for immediate use, or snap freeze and store at - 70 °C for future use.

Suspension Cells

1. Culture cells and stimulate with activator or inhibitor as desired.
2. Perform a cell count, and then pellet the cells by centrifugation.
3. Aspirate the culture media and wash twice with ice-cold PBS.
4. Completely remove the final PBS wash and add ice-cold 1X Assay/Lysis Buffer to the cell pellet (0.5 – 1 mL per 1×10^7 cells).
5. Lyse the cells by repeated pipetting.
6. Transfer the lysates to appropriate size tubes and place on ice.
7. If nuclear lysis occurs, the cell lysates may become very viscous and difficult to pipette. If this occurs, lysates can be passed through a 27½-gauge syringe needle 3-4 times to shear the genomic DNA.
8. Clear the lysates by centrifugation for 10 minutes (12,000 x g at 4 °C).
9. Collect the supernatant and store samples on ice for immediate use, or snap freeze and store at - 70 °C for future use.

In vitro GTP γ S/GDP Protein Loading for positive and negative controls

Note: In vivo stimulation of cells will activate approximately 10% of the available Arf 6, whereas in

NewEast Biosciences
24 Whitewoods Lane
Malvern , PA 19355

5

FAX: 610-945-2008

Phone: 610-945-2007

Web: www.neweastbio.com

E-mail: sale@neweastbio.com

in vitro GTP γ S protein loading will activate nearly 90% of the Arf 6.

- 1, Aliquot 0.5 ml of each cell extract to two microfuge tubes (or use 1 μ g of purified Arf 6 protein).
- 2, To each tube, add 20 μ l of 0.5 M EDTA (to 20 mM final concentration).
- 3, Add 5 μ l of 100 X GTP γ S (to 100 μ M, final concentration) to one tube (positive control).
- 4, Add 5 μ l of 100 X GDP (to 1 mM, final concentration) to the second tube (negative control).
- 5, Incubate the tubes at 30°C for 30 minutes with agitation.
- 6, Stop loading by placing the tubes on ice and adding 32.5 μ l of 1 M MgCl₂ (to 60 mM, final concentration).

Assay Procedure

I. Active Arf 6 Pull-Down Assay

1. Aliquot 0.5 – 1 mL of cell lysate to a microcentrifuge tube.
2. Adjust the volume of each sample to 1 mL with 1X Assay/Lysis Buffer.
3. Add 1 μ l anti-active Arf 6 monoclonal antibody to the tube.
4. Thoroughly resuspend the protein A/G Agarose bead slurry by vortexing or titrating.
5. Quickly add 20 μ L of resuspended bead slurry to each tube.
6. Incubate the tubes at 4 °C for 1 hour with gentle agitation.
7. Pellet the beads by centrifugation for 1 min at 5,000 x g.
8. Aspirate and discard the supernatant, making sure not to disturb/remove the bead pellet.
9. Wash the bead 3 times with 0.5 mL of 1X Assay/Lysis Buffer, centrifuging and aspirating each time.
10. After the last wash, pellet the beads and carefully remove all the supernatant.
11. Resuspend the bead pellet in 20 μ L of 2X reducing SDS-PAGE sample buffer.
12. Boil each sample for 5 minutes.
13. Centrifuge each sample for 10 seconds at 5,000 x g.

II. Electrophoresis and Transfer

1. Load 15 μ L/well of pull-down supernatant to a polyacrylamide gel (17%). Also, it's

recommended to include a pre-stained MW standard (as an indicator of a successful transfer in step 3).

2. Perform SDS-PAGE following the manufacturer's instructions.
3. Transfer the gel proteins to a PVDF or nitrocellulose membrane following the manufacturer's instructions.

III. Immunoblotting and Detection (all steps are at room temperature, with agitation)

1. Following the electroblotting step, immerse the PVDF membrane in 100% Methanol for 15 seconds, and then allow it to dry at room temperature for 5 minutes.

Note: If Nitrocellulose is used instead of PVDF, this step should be skipped.

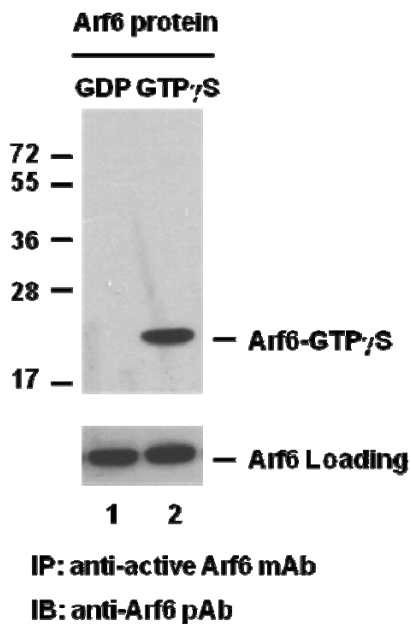
2. Block the membrane with 5% non-fat dry milk or 3% BSA in TBST for 1 hr at room temperature with constant agitation.

Incubate the membrane with anti- Arf 6 rabbit polyclonal antibody, freshly diluted 1:50~1000 (depending on the amount of Arf 6 proteins in your samples) in 5% non-fat dry milk or 3% BSA/TBST, for 1-2 hr at room temperature with constant agitation or at 4°C overnight.

3. Wash the blotted membrane three times with TBST, 5 minutes each time.
4. Incubate the membrane with a secondary antibody (e.g. Goat Anti-Rabbit IgG, HRP-conjugate), freshly diluted 1:1000 in 5% non-fat dry milk or 3% BSA/TBST, for 1 hr at room temperature with constant agitation.
5. Wash the blotted membrane three times with TBST, 5 minutes each time.
6. Use the detection method of your choice such as ECL.

Example of Results

The following figure demonstrates typical results seen with NewEast Biosciences Arf 6 Activation Assay Kit. One should use the data below for reference only.



Arf6 activation assay. Purified Arf6 proteins were immunoprecipitated after treated with GDP (lane 1) or GTP γ S (lane 2). Immunoprecipitation was done with the anti-active Arf6 monoclonal antibody (Cat. No. 26918). Immunoblot was with an anti-Arf6 rabbit polyclonal antibody (Cat. No. 21032).