

FBXW7(R479L)**FBXW7(R479L)****Cat. #:** 26347**Gene Symbol:** FBW6; FBW7; FBXW7; FBX30; CDC4; SEL10**Description:** Anti-FBXW7(R479L) Mouse Monoclonal Antibody

Background: F-box/WD repeat-containing protein 7 is a protein that in humans is encoded by the FBXW7 gene. The F-box proteins constitute one of the four subunits of ubiquitin protein ligase complex called SCFs (SKP1-cullin-F-box), which function in phosphorylation-dependent ubiquitination. Mutations in this gene are detected in ovarian, breast and colorectal cancer cell lines, implicating the gene's potential role in the pathogenesis of human cancers.

Immunogen: A synthetic peptide from the internal region of FBXW7 which includes the mutation of R479L, human origin.

Applications: ELISA, WB**Recommended Dilutions:**

ELISA: 1:1000–1:5000

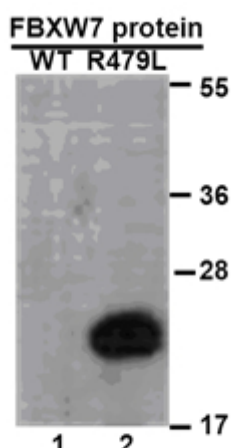
WB: 1:500–1:1000

Concentration: 1 mg/ml**Host Species:** Mouse**Format:** Liquid**Clonality:** Monoclonal**Isotype:** IgG**Purity:** Purified from ascites**Preservative:** No

Constituents: PBS (without Mg²⁺ and Ca²⁺), pH 7.4, 150 mM NaCl, 50% glycerol

Species Reactivity: Recognizes R479L mutant, but not wild type FBXW7 of vertebrates.

Storage Conditions: Store at –20°C. Avoid repeated freezing and thawing

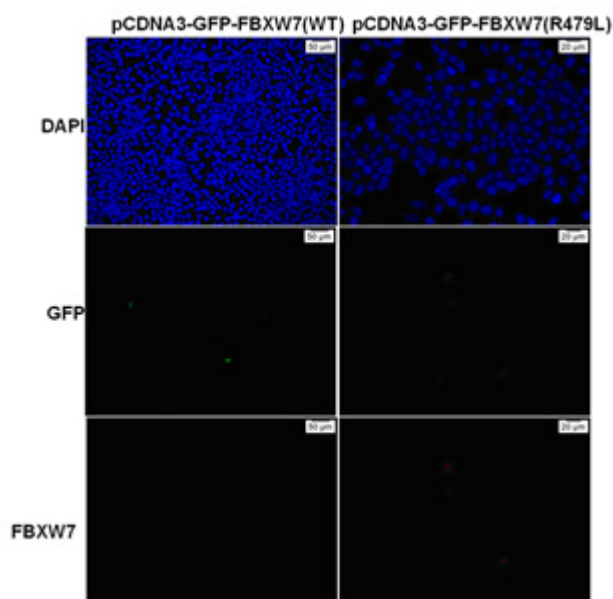


Western blot: WB: anti-FBXW7 (R479L) mAb

Western blot analysis of recombinant FBXW7(R479L) and wild type proteins.

Purified His-tagged FBXW7(R479L) protein (lane 2) and corresponding wild type protein (lane 1) were blotted with Anti-FBXW7(R479L) monoclonal antibody (Cat. #26347).

Immunofluorescence:



Immunofluorescence of cells expressing FBXW7 proteins with Anti-FBXW7(R479L) antibody.

HEK293T cells were transfected with pCDNA3-GFP-FBXW7 (WT) plasmid (left column) or pCDNA3-GFP-FBXW7(R479L) plasmid (right column), then fixed and stained with Anti-FBXW7(R479L) monoclonal antibody (Cat. #26347).