

4-1BB (DM66) RABBIT MAB

Cat.#: 28373

Product Name: Anti-4-1BB(DM66) Rabbit Monoclonal Antibody

Synonyms: TNFRSF9; 4-1BB; CD137; CDw137; ILA

Description: Anti-4-1BB antibody(DM66) Rabbit Monoclonal Antibody

Background: The protein encoded by this gene is a member of the TNF-receptor superfamily. This receptor contributes to the clonal expansion; survival; and development of T cells. It can also induce proliferation in peripheral monocytes; enhance T cell apoptosis induced by TCR:CD3 triggered activation; and regulate CD28 co-stimulation to promote Th1 cell responses. The expression of this receptor is induced by lymphocyte activation. TRAF adaptor proteins have been shown to bind to this receptor and transduce the signals leading to activation of NF-kappaB.

Applications: ELISA; Flow Cyt

Recommended Dilutions: ELISA 1:5000-10000; Flow Cyt 1:100

Host Species: Rabbit

Isotype: Rabbit IgG

Purification: Purified from cell culture supernatant by affinity chromatography

Species Reactivity: Human 4-1BB

Constituents: Lyophilized from sterile PBS, pH 7.4. 5% - 8% trehalose is added as protectants before lyophilization.

Storage & Shipping: Store at -20°C to -80°C for 12 months in lyophilized form. After reconstitution, if not intended for use within a month, aliquot and store at -80°C (Avoid repeated freezing and thawing).

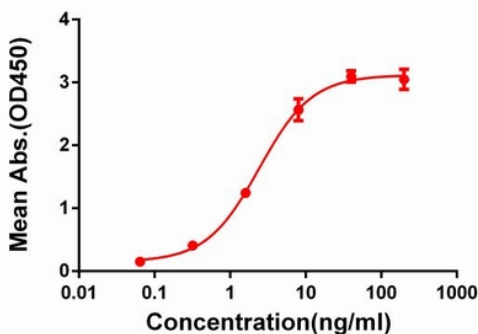


Figure 1. ELISA plate pre-coated by 2 µg/ml (100 µl/well) Human 4-1BB Protein, mFc-His Tag 11139 can bind Rabbit anti-4-1BB monoclonal antibody (clone: DM66) in a linear range of 1-100 ng/ml.

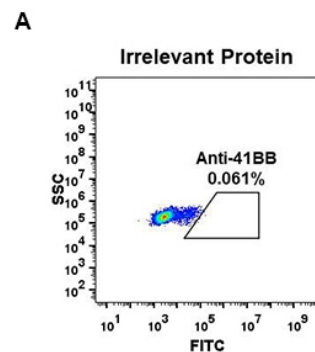


Figure 2. Expi 293 cell line transfected with irrelevant protein (A) and human 4-1BB (B) were surface stained with Rabbit anti-4-1BB monoclonal antibody 1µg/ml (clone: DM66) followed by Alexa 488-conjugated anti-rabbit IgG secondary antibody.

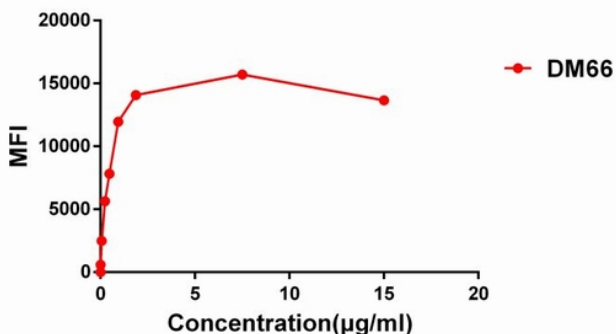


Figure 3. Flow cytometry data of serially titrated Rabbit anti-4-1BB monoclonal antibody (clone: DM66) on Expi 293 cell line transfected with human 4-1BB. The Y-axis represents the mean fluorescence intensity (MFI) while the X-axis represents the concentration of IgG used.

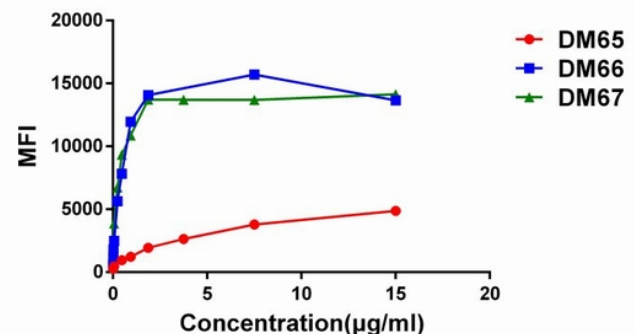


Figure 4. Affinity ranking of different Rabbit anti-4-1BB mAb clones by titration of different concentration onto Expi 293 cell line transfected with human 4-1BB. The Y-axis represents the mean fluorescence intensity (MFI) while the X-axis represents the concentration of IgG used.



Product Description

Pioneering GTPase and Oncogene Product Development since 2010
