

## 5T4 (DM138) RABBIT MAB

**Cat.#:** 28483

**Product Name:** Anti-5T4(DM138) Rabbit Monoclonal Antibody

**Synonyms:** 5T4

**Description:** Anti-5T4 antibody(DM138) Rabbit Monoclonal Antibody

**Background:** This gene encodes a leucine-rich transmembrane glycoprotein that may be involved in cell adhesion. The encoded protein is an oncofetal antigen that is specific to trophoblast cells. In adults this protein is highly expressed in many tumor cells and is associated with poor clinical outcome in numerous cancers. Alternate splicing in the 5' UTR results in multiple transcript variants that encode the same protein.

**Applications:** ELISA; Flow Cyt

**Recommended Dilutions:** ELISA 1:5000-10000; Flow Cyt 1:100

**Host Species:** Rabbit

**Isotype:** Rabbit IgG

**Purification:** Purified from cell culture supernatant by affinity chromatography

**Species Reactivity:** Human 5T4

**Constituents:** Lyophilized from sterile PBS, pH 7.4. 5 % – 8% trehalose is added as protectants before lyophilization.

**Storage & Shipping:** Store at  $-20^{\circ}\text{C}$  to  $-80^{\circ}\text{C}$  for 12 months in lyophilized form. After reconstitution, if not intended for use within a month, aliquot and store at  $-80^{\circ}\text{C}$  (Avoid repeated freezing and thawing).

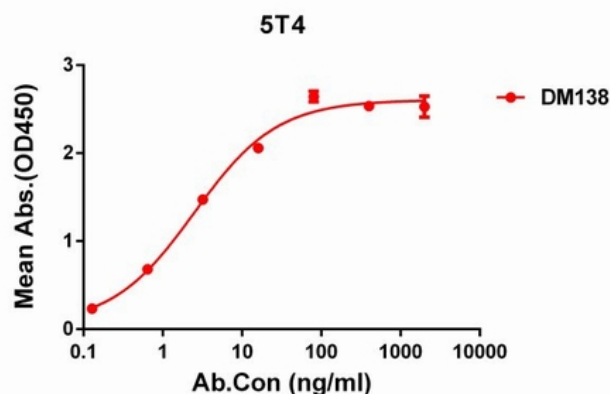


Figure 1. ELISA plate pre-coated by  $1\ \mu\text{g/ml}$  ( $100\ \mu\text{l/well}$ ) Human 5T4 protein, His tagged protein 11232 transfected with human 5T4 (Blue histogram) can bind Rabbit anti-5T4 monoclonal antibody (clone: DM138) in a linear range of 0.1-16 ng/ml.

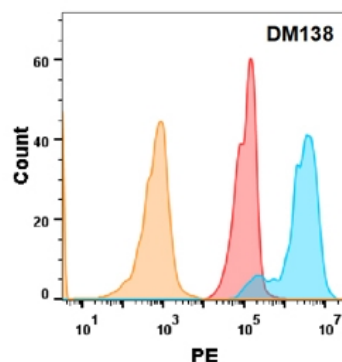


Figure 2. 5T4 protein is highly expressed on the surface of Expi293 cell membrane. Flow cytometry analysis with Anti-5T4 (DM138) on Expi293 cells transfected with human 5T4 (Blue histogram) or Expi293 transfected with irrelevant protein (Red histogram), and Isotype antibody on Expi293 transfected with irrelevant protein (Orange histogram)