

## ABL(Y253H)

### ABL(Y253H)

**Cat. #:** 26154

**Size:** 100 µL

**Gene Symbol:** ABL1; ABL; JTK7; bcr-abl; c-ABL; p150; v-abl

**Description:** Anti-ABL(Y253H) Mouse Monoclonal Antibody

**Background:** V-abl Abelson murine leukemia viral oncogene homolog 1 also known as ABL1, is a cytoplasmic and nuclear protein tyrosine kinase that has been implicated in processes of cell differentiation, cell division, cell adhesion, stress response and cell migration. Deficient in Abl can cause severe disease such as leukemia.

**Immunogen:** A synthetic peptide from the internal region of Abl which includes the mutation of Y253H, human origin.

**Applications:** ELISA, WB, IHC, IF

**Recommended Dilutions:**

ELISA: 1:1000–1:5000

WB: 1:100–1:1000

IF: 1:50–1:100

IHC: 1:50–1:100

**Concentration:** 1 mg/ml

**Host Species:** Mouse

**Format:** Liquid

**Clonality:** Monoclonal

**Isotype:** IgG

**Purity:** Purified from ascites

**Preservative:** No

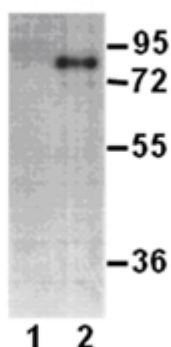
**Constituents:** PBS (without  $Mg^{2+}$  and  $Ca^{2+}$ ), pH 7.4, 150 mM NaCl, 50% glycerol

**Species Reactivity:** recognizes Abl Y253H, but not wild type of vertebrates.

**Storage Conditions:** Store at  $-20^{\circ}C$ . Avoid repeated freezing and thawing

## Western blot:

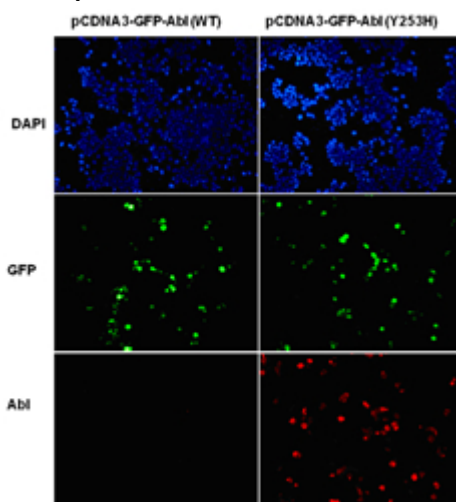
ABL protein  
WT Y253H



WB: Anti-ABL(Y253H) mAb

## Western blot analysis of recombinant Abl(Y253H) and wild type proteins.

Purified His-tagged Abl(Y253H) protein (amino acids 1-76, lane 2) and corresponding wild type protein (lane 1) were blotted with anti-ABL(Y253H) mouse monoclonal antibody (Cat. #26154).



## Immunofluorescence:

### Immunofluorescence of cells expressing Abl proteins with anti-Abl(Y253H) antibody.

HEK293T cells were transfected with pCDNA3-GFP-Abl (WT) plasmid (left column) or pCDNA3-GFP-Abl(Y253H) plasmid (right column), then fixed and stained with anti-ABL(Y253H) monoclonal antibody (Cat. #26154).