

ACE2 (DM47) RABBIT MAB

Cat.#: 28340

Product Name: Anti-ACE2(DM47) Rabbit Monoclonal Antibody

Synonyms: ACE-2; ACEH; ACE2

Description: Anti-ACE2 antibody(DM47) Rabbit Monoclonal Antibody

Background: The protein encoded by this gene belongs to the angiotensin-converting enzyme family of dipeptidyl carboxydipeptidases and has considerable homology to human angiotensin I converting enzyme. This secreted protein catalyzes the cleavage of angiotensin I into angiotensin 1-9; and angiotensin II into the vasodilator angiotensin 1-7. The organ- and cell-specific expression of this gene suggests that it may play a role in the regulation of cardiovascular and renal function; as well as fertility. In addition; the encoded protein is a functional receptor for the spike glycoprotein of the human coronaviruses SARS and HCoV-NL63.

Applications: ELISA; Flow Cyt

Recommended Dilutions: ELISA 1:5000-10000; Flow Cyt 1:100

Host Species: Rabbit

Isotype: Rabbit IgG

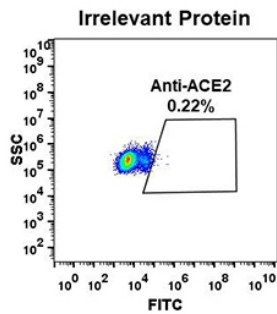
Purification: Purified from cell culture supernatant by affinity chromatography

Species Reactivity: Human ACE2

Constituents: Lyophilized from sterile PBS, pH 7.4. 5 % – 8% trehalose is added as protectants before lyophilization.

Storage & Shipping: Store at -20°C to -80°C for 12 months in lyophilized form. After reconstitution, if not intended for use within a month, aliquot and store at -80°C (Avoid repeated freezing and thawing).

A



B

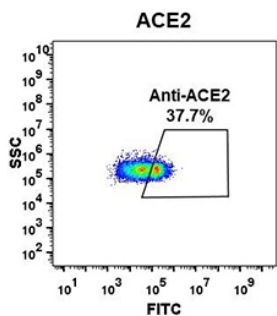


Figure 1. Expi 293 cell line transfected with irrelevant protein (left) and human ACE2 (right) were surface stained with Rabbit anti-ACE2 monoclonal antibody 1 μ g/ml (clone: DM47) followed by Alexa 488-conjugated anti-rabbit IgG secondary antibody.

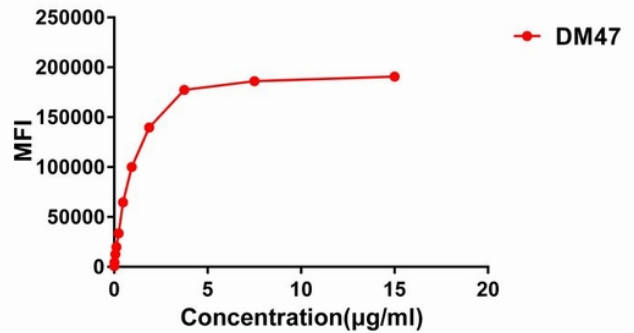


Figure 2. Flow cytometry data of serially titrated Rabbit anti-ACE2 monoclonal antibody (clone: DM47) on Expi 293 cell line transfected with human ACE2. The Y-axis represents the mean fluorescence intensity (MFI) while the X-axis represents the concentration of IgG used.

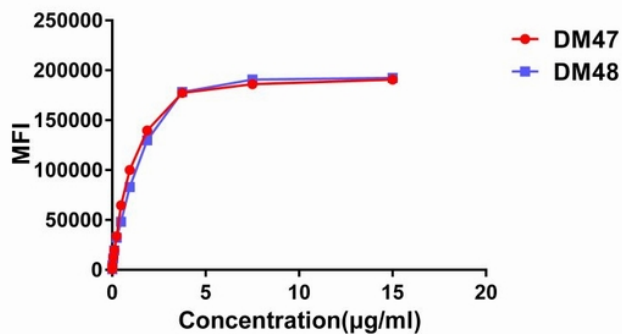


Figure 3. Affinity ranking of different Rabbit anti-ACE2 mAb clones by titration of different concentration onto Expi 293 cell line transfected with human ACE2. The Y-axis represents the mean fluorescence intensity (MFI) while the X-axis represents the concentration of IgG used.