

## ADGRE2 (DMC370) IGG1 CHIMERIC MAB

**Cat.#:** 28203

**Product Name:** Anti-ADGRE2(DMC370) IgG1 Chimeric Monoclonal Antibody

**Synonyms:** Adhesion G protein-coupled receptor E2;EGF-like module receptor 2;EGF-like module-containing mucin-like hormone receptor-like 2;CD312

**Description:** Anti-ADGRE2 antibody(DMC370) IgG1 Chimeric Monoclonal Antibody

**Background:** This gene encodes a member of the class B seven-span transmembrane (TM7) subfamily of G-protein coupled receptors. These proteins are characterized by an extended extracellular region with a variable number of N-terminal epidermal growth factor-like domains coupled to a TM7 domain via a mucin-like spacer domain. The encoded protein is expressed mainly in myeloid cells where it promotes cell-cell adhesion through interaction with chondroitin sulfate chains. This gene is situated in a cluster of related genes on chromosome 19. Alternatively spliced transcript variants encoding multiple isoforms have been observed for this gene.

**Applications:** Flow Cyt

**Recommended Dilutions:** Flow Cyt 1:100

**Host Species:** Rabbit

**Isotype:** Rabbit:Human Fc chimeric IgG1

**Purification:** Purified from cell culture supernatant by affinity chromatography

**Species Reactivity:** Human ADGRE2

**Constituents:** Lyophilized from sterile PBS, pH 7.4. 5 % – 8% trehalose is added as protectants before lyophilization.

**Storage & Shipping:** Store at -20°C to -80°C for 12 months in lyophilized form. After reconstitution, if not intended for use within a month, aliquot and store at -80°C (Avoid repeated freezing and thawing).

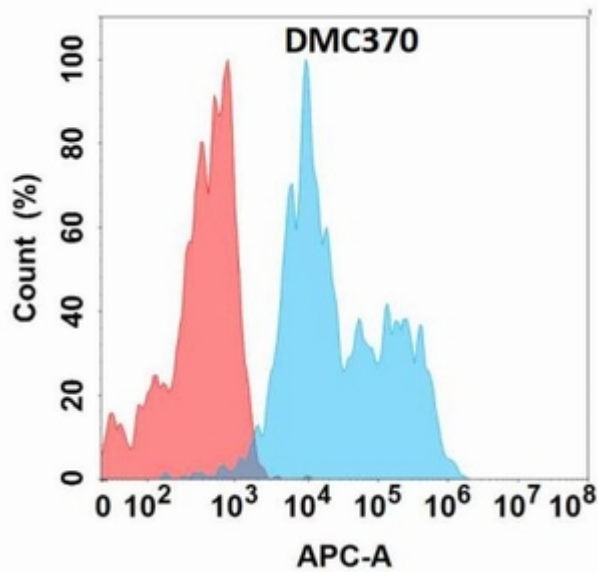


Figure 1. Flow cytometry analysis with Anti-ADGRE2 (DMC370) on Expi293 cells transfected with human ADGRE2 (Blue histogram) or Expi293 transfected with irrelevant protein (Red histogram).