

## AKT1 PAB

### AKT1 Polyclonal Antibody

**Cat. #:** 21274

**Gene Symbol:** AKT1, AKT, PKB, PKB ALPHA, PRKBA, RAC, RAC ALPHA

**Description:** Anti-AKT1 Rabbit Polyclonal Antibody

**Background:** AKT1 is one of 3 closely related serine/threonine protein kinases (AKT1, AKT2 and AKT3) called the AKT kinase, and which regulate many processes including metabolism, proliferation, cell survival, growth and angiogenesis. Its function is mediated through serine and/or threonine phosphorylation of a range of downstream substrates. There are evidences that mutation or abnormal expression in AKT1 is associated with cancers.

**Immunogen:** Purified AKT1 protein, human origin.

**Applications:** ELISA, WB, IHC

**Recommended Dilutions:**

ELISA: 1:1000-1:5000

WB: 1:100-1:1000

IHC: 1:50-1:200

**Concentration:** 0.2mg/ml

**Host Species:** Rabbit

**Format:** Liquid

**Clonality:** Polyclonal

**Isotype:** IgG

**Purity:** Purified from serum

**Preservative:** No

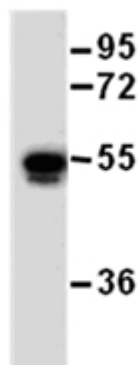
**Constituents:** PBS (without Mg<sup>2+</sup> and Ca<sup>2+</sup>), pH 7.4, 150 mM NaCl, 50% glycerol

**Species Reactivity:** Recognizes AKT1 of vertebrates.

**Storage Conditions:** Store at -20°C. Avoid repeated freezing and thawing

## Western blot:

AKT1 protein

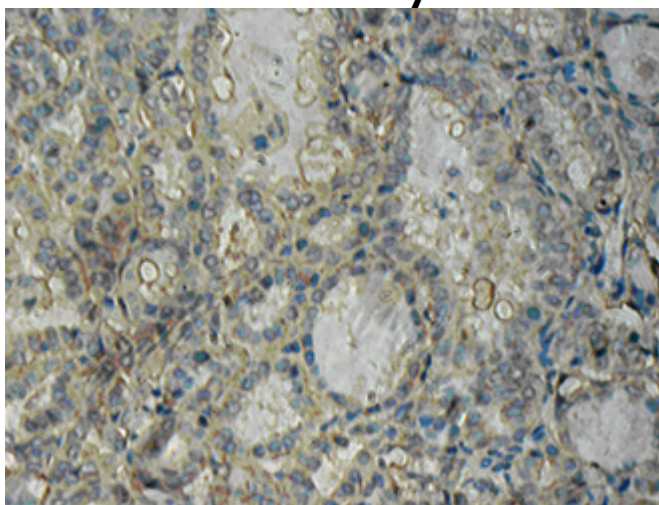


**WB: Anti-AKT1 pAb**

## Western blot analysis of recombinant AKT1 protein.

Purified His-tagged AKT1 protein was blotted with Anti-AKT1 rabbit polyclonal antibody (Cat. #21274).

## Immunohistochemistry:



Immunohistochemical analysis of paraffin-embedded human thyroid cancer tissue with Anti-AKT1 polyclonal antibody (Cat. #21274). Tissue samples were fixed with formaldehyde and blocked with 1% serum for 15 min at 37 °C. Antigen retrieval was by heat mediation in citrate buffer (pH6). Samples were then incubated with primary antibody (1:50 dilution) overnight at 4°C. A HRP-conjugated Goat anti-mouse IgG (1:50 dilution) was used as secondary antibody.