

ALB (DMC275) IGG1 CHIMERIC MAB

Cat.#: 28183

Product Name: Anti-ALB(DMC275) IgG1 Chimeric Monoclonal Antibody

Synonyms: HSA; PRO0883; PRO0903; PRO1341

Description: Anti-ALB antibody(DMC275) IgG1 Chimeric Monoclonal Antibody

Background: This gene encodes the most abundant protein in human blood. This protein functions in the regulation of blood plasma colloid osmotic pressure and acts as a carrier protein for a wide range of endogenous molecules including hormones; fatty acids; and metabolites; as well as exogenous drugs. Additionally; this protein exhibits an esterase-like activity with broad substrate specificity. The encoded preproprotein is proteolytically processed to generate the mature protein. A peptide derived from this protein; EPI-X4; is an endogenous inhibitor of the CXCR4 chemokine receptor.

Applications: Flow Cyt

Recommended Dilutions: Flow Cyt 1:100

Host Species: Rabbit

Isotype: Rabbit:Human Fc chimeric IgG1

Purification: Purified from cell culture supernatant by affinity chromatography

Species Reactivity: Human ALB

Constituents: Lyophilized from sterile PBS, pH 7.4. 5 % – 8% trehalose is added as protectants before lyophilization.

Storage & Shipping: Store at -20°C to -80°C for 12 months in lyophilized form. After reconstitution, if not intended for use within a month, aliquot and store at -80°C (Avoid repeated freezing and thawing).

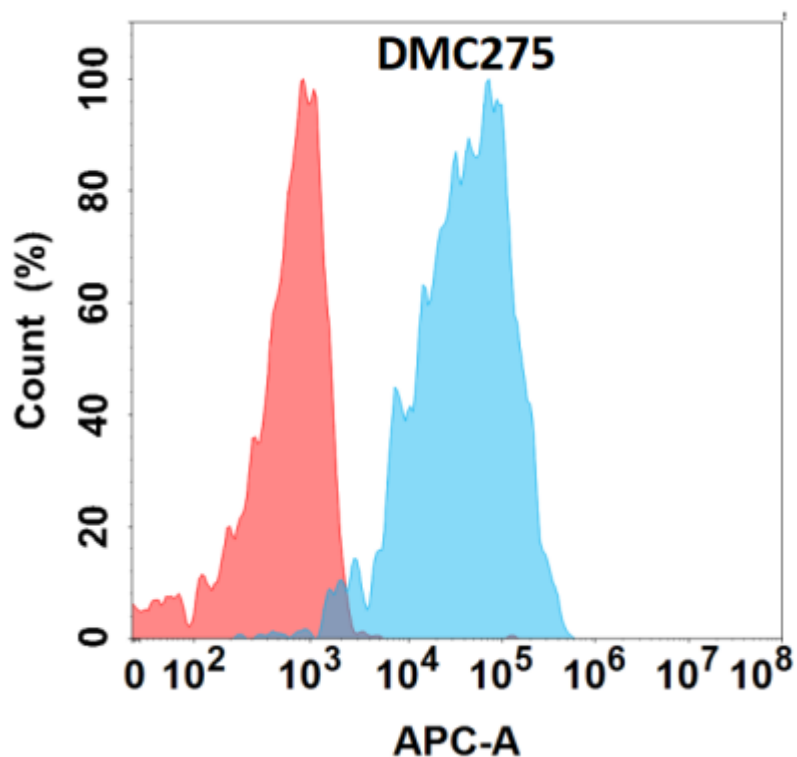


Figure 1. Flow cytometry analysis with Anti-ALB (DMC275) on Expi293 cells transfected with human ALB (Blue histogram) or Expi293 transfected with irrelevant protein (Red histogram).