

ALK(C1156Y)**ALK(C1156Y)****Cat. #:** 26226**Gene Symbol:** ALK, CD246, NBLST3**Description:** Anti-ALK(C1156Y) Mouse Monoclonal Antibody

Background: Anaplastic lymphoma kinase (ALK) also known as CD246 (cluster of differentiation 246) is a tyrosine kinase receptor that plays an important role in the development of the brain and nervous systems. Deficiencies in ALK, which most commonly as a fusion with other genes, are indicated in cancers.

Immunogen: A synthetic peptide from the internal region of ALK which includes the mutation of C1156Y, human origin.

Applications: ELISA, WB, IF, IHC**Recommended Dilutions:**

ELISA: 1:1000–1:5000

WB: 1:500–1:2000

IF: 1:50–1:100

IHC: 1:50–1:100

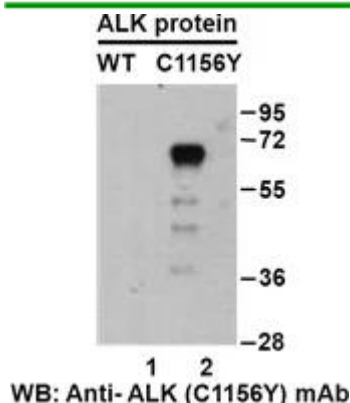
Concentration: 1 mg/ml**Host Species:** Mouse**Format:** Liquid**Clonality:** Monoclonal**Isotype:****Purity:** Purified from ascites**Preservative:** No

Constituents: PBS (without Mg^{2+} and Ca^{2+}), pH 7.4, 150 mM NaCl, 50% glycerol

Species Reactivity: Recognizes C1156Y mutant, but not wild type ALK of vertebrates.

Storage Conditions: Store at $-20^{\circ}C$. Avoid repeated freezing and thawing

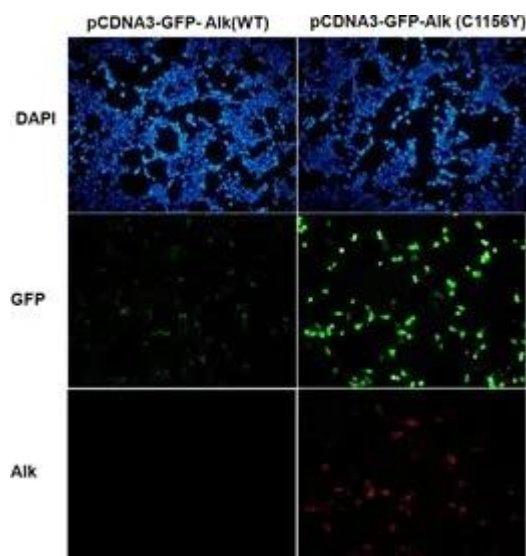
Western blot:



Western blot analysis of recombinant ALK(C1156Y) and wild type proteins.

Purified His-tagged ALK(C1156Y) protein (lane 2) and corresponding wild type protein (lane 1) were blotted with Anti-ALK(C1156Y) monoclonal antibody (Cat. #26226).

Immunofluorescence:



Immunofluorescence of cells expressing ALK proteins with Anti-ALK(C1156Y) antibody.

HEK293T cells were transfected with pCDNA3-GFP-ALK (WT) plasmid (left column) or pCDNA3-GFP-ALK(C1156Y) plasmid (right column), then fixed and stained with Anti-ALK(C1156Y) monoclonal antibody (Cat. #26226).