

## ALK(D1225N)

### ALK(D1225N)

**Cat. #:** 26290

**Gene Symbol:** ALK, CD246, NBLST3

**Description:** Anti-ALK(D1225N) Mouse Monoclonal Antibody

**Background:** Anaplastic lymphoma kinase (ALK) also known as CD246 (cluster of differentiation 246) is a tyrosine kinase receptor that plays an important role in the development of the brain and nervous systems. Deficiencies in ALK, which most commonly as a fusion with other genes, are indicated in cancers.

**Immunogen:** A synthetic peptide from the internal region of ALK which includes the mutation of D1225N, human origin.

**Applications:** ELISA, WB

**Recommended Dilutions:**

ELISA: 1:1000–1:5000

WB: 1:500–1:2000

**Concentration:** 1 mg/ml

**Host Species:** Mouse

**Format:** Liquid

**Clonality:** Monoclonal

**Isotype:** IgG

**Purity:** Purified from ascites

**Preservative:** No

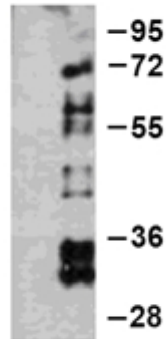
**Constituents:** PBS (without Mg<sup>2+</sup> and Ca<sup>2+</sup>), pH 7.4, 150 mM NaCl, 50% glycerol

**Species Reactivity:** Recognizes D1225N mutant, but not wild type ALK of vertebrates.

**Storage Conditions:** Store at -20°C. Avoid repeated freezing and thawing

ALK protein

WT D1225N



1 2

**Western blot:** WB: Anti-ALK (D1225N) mAb

**Western blot analysis of recombinant ALK(D1225N) and wild type proteins.**

Purified His-tagged ALK(D1225N) protein (1060-1620aa, 68KD, lane 2) and corresponding wild type protein (lane 1) were blotted with Anti-ALK(D1225N) monoclonal antibody (Cat. #26290).