

ALK(R1275Q)

ALK(R1275Q)

Cat. #: 26151

Gene Symbol: ALK, CD246, NBLST3

Description: Anti-ALK(R1275Q) Mouse Monoclonal Antibody

Background: Anaplastic lymphoma kinase (ALK) also known as CD246 (cluster of differentiation 246) is a tyrosine kinase receptor that plays an important role in the development of the brain and nervous systems. Deficiencies in ALK, which most commonly as a fusion with other genes, are indicated in cancers.

Immunogen: A synthetic peptide from the internal region of ALK which includes the mutation of R1275Q, human origin.

Applications: ELISA, WB, IHC

Recommended Dilutions:

ELISA: 1:1000–1:5000

WB: 1:100–1:1000

IHC: 1:50–1:100

Concentration: 0.5 mg/ml

Host Species: Mouse

Format: Liquid

Clonality: Monoclonal

Isotype: IgG

Purity: Purified from ascites

Preservative: No

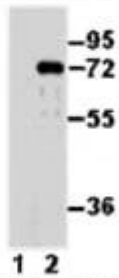
Constituents: PBS (without Mg²⁺ and Ca²⁺), pH 7.4, 150 mM NaCl, 50% glycerol

Species Reactivity: Recognizes ALK(R1275Q), but not wild type ALK protein from vertebrates.

Storage Conditions: Store at –20°C. Avoid repeated freezing and thawing

Western blot:

ALK protein
WTR1275Q



WB: Anti-ALK(R1275Q) mAb

Western blot analysis of recombinant ALK(R1275Q) and wild type proteins. Purified His-tagged ALK(R1275Q) protein (amino acids 1060-1620, lane 2) and corresponding wild type protein (lane 1) were blotted with Anti-ALK(R1275Q) mouse monoclonal antibody (Cat. #26151).