

ALPP (DMC686) IGG1 CHIMERIC MAB**Cat.#:** 28284**Product Name:** Anti-ALPP(DMC686) IgG1 Chimeric Monoclonal Antibody**Synonyms:** ALP; ALPI; IAP; PALP; PLAP; PLAP-1**Description:** Anti-ALPP antibody(DMC686) IgG1 Chimeric Monoclonal Antibody

Background: The protein encoded by this gene is an alkaline phosphatase; a metalloenzyme that catalyzes the hydrolysis of phosphoric acid monoesters. It belongs to a multigene family composed of four alkaline phosphatase isoenzymes. The enzyme functions as a homodimer and has a catalytic site containing one magnesium and two zinc ions; which are required for its enzymatic function. One of the main sources of this enzyme is the liver; and thus; it's one of several indicators of liver injury in different clinical conditions. In pregnant women; this protein is primarily expressed in placental and endometrial tissue; however; strong ectopic expression has been detected in ovarian adenocarcinoma; serous cystadenocarcinoma; and other ovarian cancer cells. [provided by RefSeq; Aug 2020]

Applications: Flow Cyt**Recommended Dilutions:** Flow Cyt 1:100**Host Species:** Rabbit**Isotype:** Rabbit:Human Fc chimeric IgG1**Purification:** Purified from cell culture supernatant by affinity chromatography**Species Reactivity:** Human ALPP**Constituents:** Lyophilized from sterile PBS, pH 7.4. 5 % – 8% trehalose is added as protectants before lyophilization.**Storage & Shipping:** Store at -20°C to -80°C for 12 months in lyophilized form. After reconstitution, if not intended for use within a month, aliquot and store at -80°C (Avoid repeated freezing and thawing).

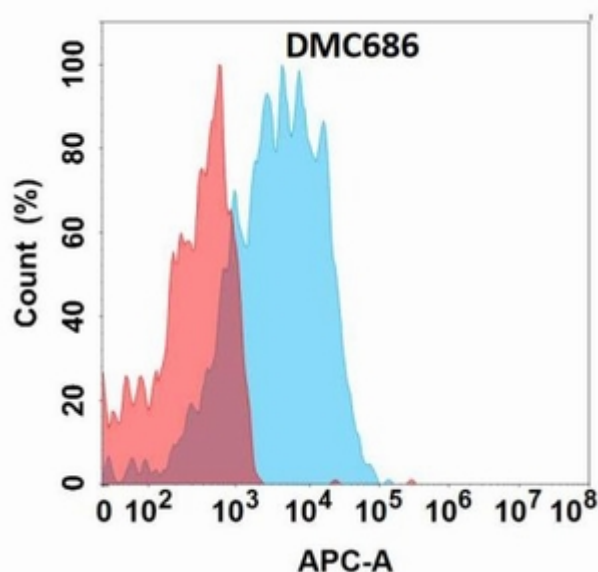


Figure 1. Flow cytometry analysis with Anti-ALPP(DMC686) on Expi293 cells transfected with human ALPP(Blue histogram) or Expi293 transfected with irrelevant protein (Red histogram).