

## MESOTHELIN MAB (AMATUXIMAB)

**Cat.#:** 28030

**Product Name:** Anti-Mesothelin (Amatuximab) Monoclonal Antibody

**Synonyms:** MSLN; Mesothelin; MPF

**Description:** Anti-Mesothelin (amatuximab) Monoclonal Antibody

**Background:** Research grade biosimilar. Not for use in therapeutic or diagnostic procedures for humans or animals.

**Applications:** ELISA; Flow Cyt

**Recommended Dilutions:** ELISA 1:5000-10000; Flow Cyt 1:100

**Host Species:** Chimeric

**Isotype:** IgG1

**Purification:** Purified from cell culture supernatant by affinity chromatography

**Species Reactivity:** Human MSLN

**Constituents:** Lyophilized from sterile PBS, pH 7.4. 5% – 8% trehalose is added as protectants before lyophilization.

**Storage & Shipping:** Store at -20°C to -80°C for 12 months in lyophilized form. After reconstitution, if not intended for use within a month, aliquot and store at -80°C (Avoid repeated freezing and thawing).

### Anti-Mesothelin (amatuximab biosimilar) mAb ELISA

0.2 µg of Mesothelin(296-580), mFc-His Tagged protein per well

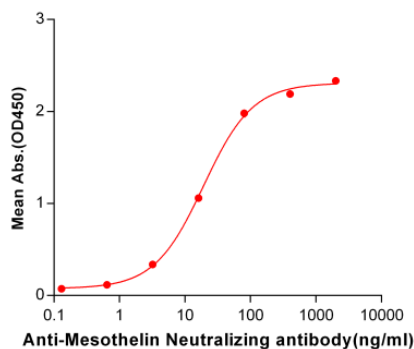


Figure 1. ELISA plate pre-coated by 2 µg/ml (100 µl/well) Human Mesothelin, mFc-His tagged protein 11159 can bind Anti-Mesothelin Neutralizing antibody in a linear range of 3.2–80.0 ng/ml.

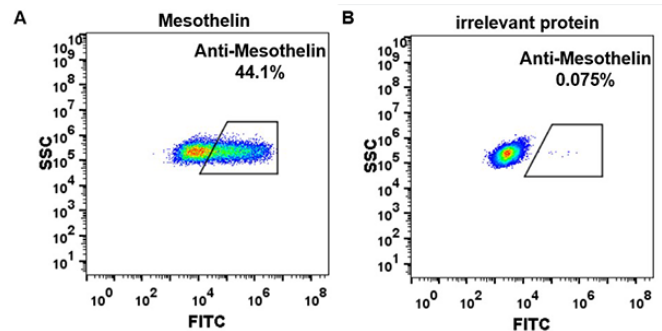


Figure 2. HEK293 cell line transfected with irrelevant protein (B) and human Mesothelin (A) were surface stained with anti-Mesothelin neutralizing antibody 1µg/ml (amatuximab) followed by Alexa 488-conjugated anti-human IgG secondary antibody.