

## IFNAR1 MAB (ANIFROLUMAB)

**Cat.#:** 28115

**Product Name:** Anti-IFNAR1(Anifrolumab) Monoclonal Antibody

**Synonyms:** IFN-R-1;CRF2-1;IFNAR

**Description:** Anti-IFNAR1(anifrolumab ) Monoclonal Antibody

**Background:** Research grade biosimilar. Not for use in therapeutic or diagnostic procedures for humans or animals.

**Applications:** ELISA; Flow Cyt

**Recommended Dilutions:** ELISA 1:5000-10000; Flow Cyt 1:100

**Host Species:** Homo sapiens

**Isotype:** IgG1

**Purification:** Purified from cell culture supernatant by affinity chromatography

**Species Reactivity:** Human IFNAR1

**Constituents:** Lyophilized from sterile PBS, pH 7.4. 5 % – 8% trehalose is added as protectants before lyophilization.

**Storage & Shipping:** Store at -20°C to -80°C for 12 months in lyophilized form. After reconstitution, if not intended for use within a month, aliquot and store at -80°C (Avoid repeated freezing and thawing).

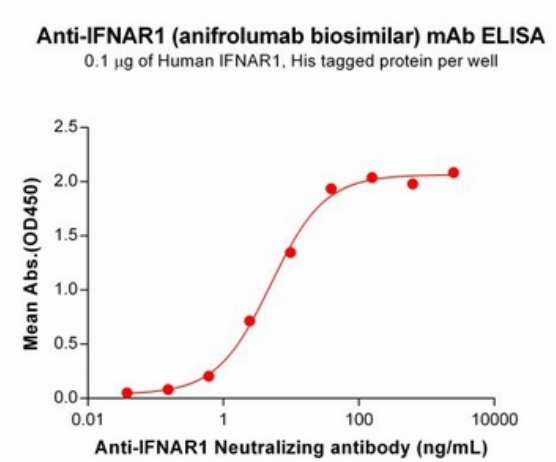


Figure 1. ELISA plate pre-coated by 1 µg/mL (100 µl/well) Human IFNAR1 Protein, His Tag 11692 can bind Anti-IFNAR1 Neutralizing antibody (28115) in a linear range of 0.61–39.06 ng/mL.

**Anti-IFNAR1 (anifrolumab biosimilar) mAb ELISA**  
0.2 µg of Human IFNAR1, hFc tagged protein per well

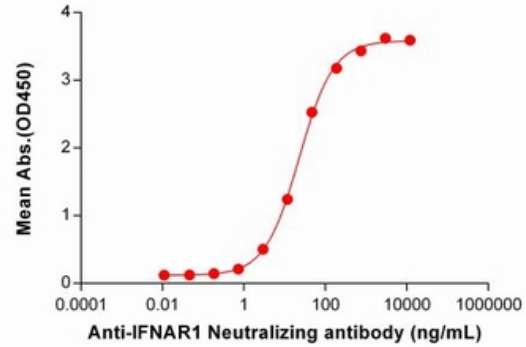


Figure 2. ELISA plate pre-coated by 2 µg/mL (100 µl/well) Human IFNAR1 Protein, hFc Tag (11561) can bind Anti-IFNAR1 Neutralizing antibody (28115) in a linear range of 0.73–187.50 ng/mL. In order to specifically detect 28115, mouse anti-human Fab-specific antibody was used as detection antibody.

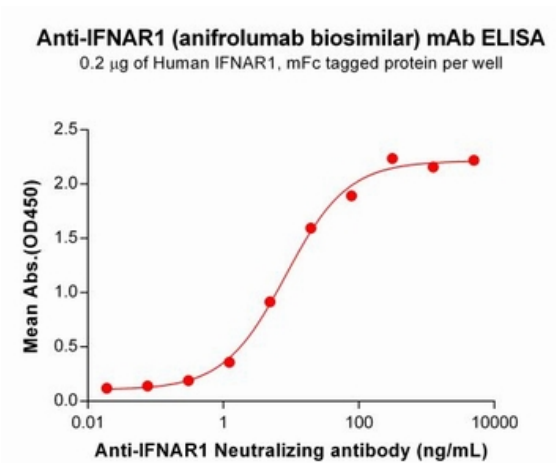


Figure 3. ELISA plate pre-coated by 2 µg/mL (100 µl/well) Human IFNAR1 Protein, mFc Tag 11526 can bind Anti-IFNAR1 Neutralizing antibody (28115) in a linear range of 1.22–312.50 ng/mL.

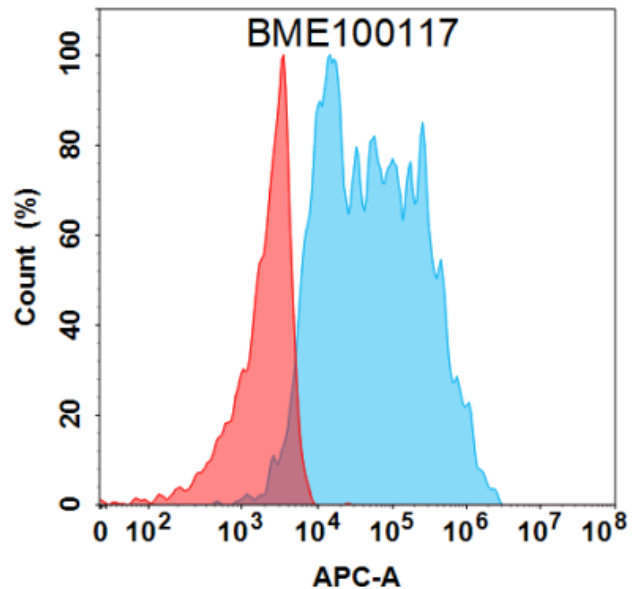


Figure 4. Flow cytometry analysis with 1 µg/mL Anti-IFNAR1 (anifrolumab biosimilar) mAb (28115) on Expi293 cells transfected with Human IFNAR1 protein (Blue histogram) or Expi293 transfected with irrelevant protein (Red histogram).