

## 14-3-3 ALPHA/BETA RABBIT MAB

**Cat.#:** N263201

**Product Name:** Anti-14-3-3 alpha/beta Rabbit Monoclonal Antibody

**Synonyms:** YWHAB; 14-3-3 protein beta/alpha; Protein 1054; Protein kinase C inhibitor protein 1; KCIP-1

**UNIPROT ID:** P31946

**Background:** Adapter protein implicated in the regulation of a large spectrum of both general and specialized signaling pathways. Binds to a large number of partners, usually by recognition of a phosphoserine or phosphothreonine motif. Binding generally results in the modulation of the activity of the binding partner. Negative regulator of osteogenesis.

**Immunogen:** A synthetic peptide of human 14-3-3 alpha/beta

**Applications:** WB,IHC-P,IP

**Recommended Dilutions:** WB: 1/500-1/1000 IHC: 1/50-1/100 IP: 1/20

**Host Species:** Rabbit

**Clonality:** Rabbit Monoclonal

**Clone ID:** R08-4A7

**MW:** Calculated MW: 28 kDa; Observed MW: 28 kDa

**Isotype:** IgG

**Purification:** Affinity Purified

**Species Reactivity:** Human,Mouse,Rat

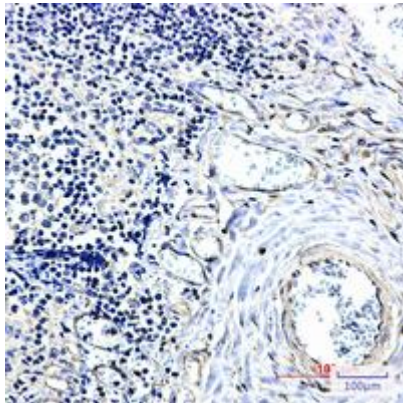
**Conjugation:** Unconjugated

**Modification:** Unmodified

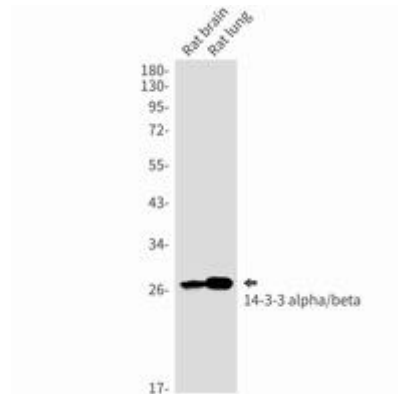
**Constituents:** PBS (without Mg<sup>2+</sup> and Ca<sup>2+</sup>), pH 7.3 containing 50% glycerol, 0.5% BSA and 0.02% sodium azide

**Research Areas:** Neuroscience

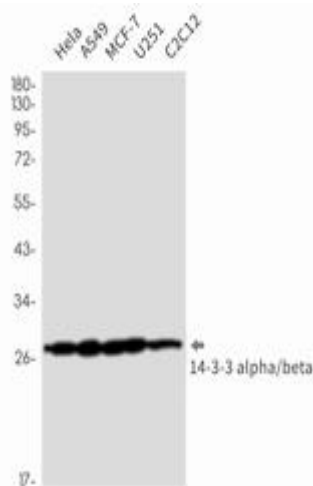
**Storage & Shipping:** Store at -20°C. Avoid repeated freezing and thawing



Immunohistochemistry analysis of paraffin-embedded Human tonsil using 14-3-3 alpha/beta antibody. High-pressure and temperature Sodium Citrate pH 6.0 was used for antigen retrieval.



Western blot analysis of 14-3-3 alpha/beta in rat brain, rat lung lysates using 14-3-3 alpha/beta antibody.



Western blot analysis of 14-3-3 alpha/beta in HeLa, A549, MCF-7, U251, C2C12 lysates using 14-3-3 alpha/beta antibody.