

14-3-3 RABBIT PAB

Cat.#: N225734

Product Name: Anti-14-3-3 Rabbit pAb

Synonyms: YWHAZ; 14-3-3 protein zeta/delta; Protein kinase C inhibitor protein 1; KCIP-1; YWHAB; 14-3-3 protein beta/alpha; Protein 1054; Protein kinase C inhibitor protein 1; KCIP-1

UNIPROT ID: P31946/P63104

Background: Adapter protein implicated in the regulation of a large spectrum of both general and specialized signaling pathways. Binds to a large number of partners, usually by recognition of a phosphoserine or phosphothreonine motif. Binding generally results in the modulation of the activity of the binding partner. Negative regulator of osteogenesis.

Immunogen: A synthesized peptide derived from human 14-3-3

Applications: WB,IHC-P,FC

Recommended Dilutions: WB: 1/500-1/1000 IHC: 1/50-1/100 FC: 1/50-1/100

Host Species: Rabbit

Clonality: Rabbit Polyclonal

Clone ID: -

MW: Calculated MW: 28 kDa; Observed MW: 28 kDa

Isotype: IgG

Purification: Affinity Chromatography

Species Reactivity: Human,Mouse,Rat

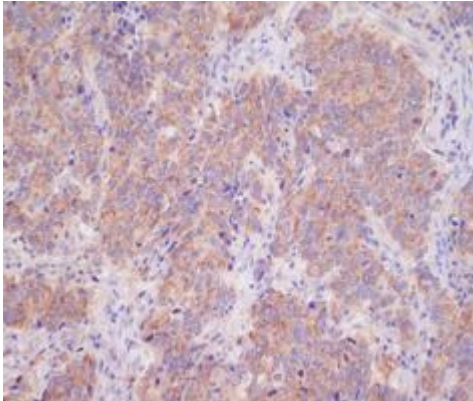
Conjugation: Unconjugated

Modification: Unmodified

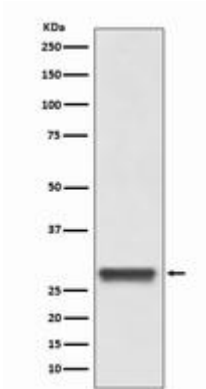
Constituents: PBS (without Mg²⁺ and Ca²⁺), pH 7.3 containing 50% glycerol, 0.5% BSA and 0.02% sodium azide

Research Areas: Neuroscience

Storage & Shipping: Store at -20°C. Avoid repeated freezing and thawing



Immunohistochemistry analysis of paraffin-embedded Human breast cancer using 14-3-3 antibody. High-pressure and temperature Sodium Citrate pH 6.0 was used for antigen retrieval.



Western blot analysis of 14-3-3 in HeLa lysates using 14-3-3 antibody.