

## 15 PGDH RABBIT MAB

**Cat.#:** N261779

**Product Name:** Anti-15 PGDH Rabbit Monoclonal Antibody

**Synonyms:** 15-PGDH; Hpgd; PGDH; PGDH1; PHOAR1; SDR36C1

**UNIPROT ID:** P15428

**Background:** Prostaglandin inactivation. Contributes to the regulation of events that are under the control of prostaglandin levels. Catalyzes the NAD-dependent dehydrogenation of lipoxin A4 to form 15-oxo-lipoxin A4. Inhibits in vivo proliferation of colon cancer cells.

**Immunogen:** Recombinant protein of human 15-PGDH

**Applications:** WB,IHC-F,IHC-P,ICC/IF

**Recommended Dilutions:** WB: 1/500-1/1000 IHC: 1/50-1/100 IF: 1/50-1/200

**Host Species:** Rabbit

**Clonality:** Rabbit Monoclonal

**Clone ID:** R09-3D2

**MW:** Calculated MW: 29 kDa; Observed MW: 25 kDa

**Isotype:** IgG

**Purification:** Affinity Purified

**Species Reactivity:** Human

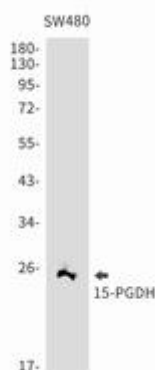
**Conjugation:** Unconjugated

**Modification:** Unmodified

**Constituents:** PBS (without Mg<sup>2+</sup> and Ca<sup>2+</sup>), pH 7.3 containing 50% glycerol, 0.5% BSA and 0.02% sodium azide

**Research Areas:** Immunology

**Storage & Shipping:** Store at -20°C. Avoid repeated freezing and thawing



Western blot analysis of 15PGDH in SW480 lysates using 15 PGDH antibody.



# Product Description

Pioneering GTPase and Oncogene Product Development since 2010

---