

4E BP1 RABBIT PAB

Cat.#: N225260

Product Name: Anti-4E BP1 Rabbit pAb

Synonyms: EIF4EBP1; Eukaryotic translation initiation factor 4E-binding protein 1; 4E-BP1; eIF4E-binding protein 1; Phosphorylated heat- and acid-stable protein regulated by insulin 1; PHAS-I

UNIPROT ID: Q13541

Background: Translation repressor protein 4E-BP1 (also known as PHAS-1) inhibits cap-dependent translation by binding to the translation initiation factor eIF4E. Hyperphosphorylation of 4E-BP1 disrupts this interaction and results in activation of cap-dependent translation. Both the PI3 kinase/Akt pathway and FRAP/mTOR kinase regulate 4E-BP1 activity.

Immunogen: Synthetic peptide.

Applications: WB,IP

Recommended Dilutions: WB: 1/500-1/1000 IP: 1/20

Host Species: Rabbit

Clonality: Rabbit Polyclonal

Clone ID: -

MW: Calculated MW: 13 kDa; Observed MW: 15-20 kDa

Isotype: IgG

Purification: Affinity Purified

Species Reactivity: Human,Mouse,Rat

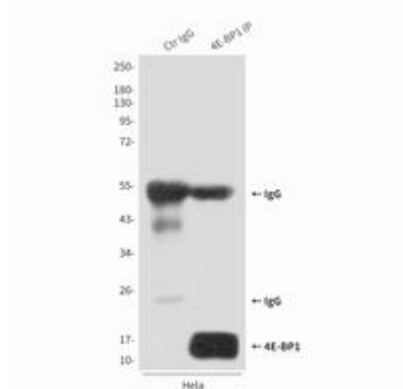
Conjugation: Unconjugated

Modification: Unmodified

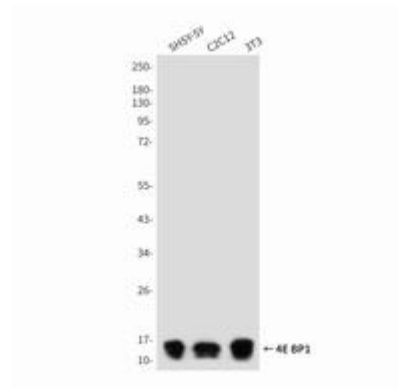
Constituents: PBS (without Mg²⁺ and Ca²⁺), pH 7.3 containing 50% glycerol, 0.5% BSA and 0.02% sodium azide

Research Areas: Epigenetics and Nuclear Signaling

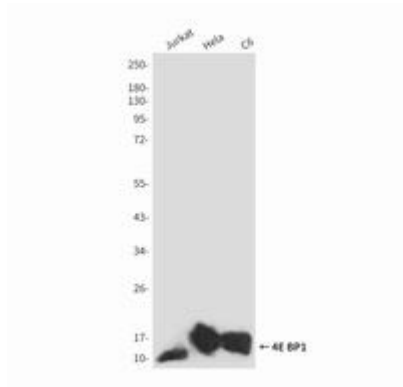
Storage & Shipping: Store at -20°C. Avoid repeated freezing and thawing



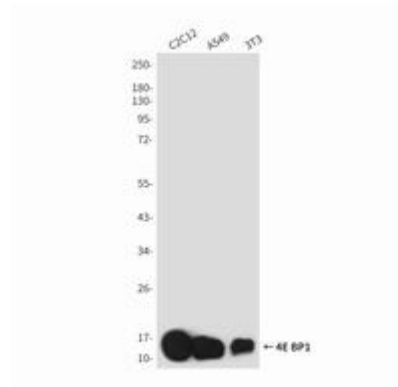
Immunoprecipitation analysis of 4E-BP1 in HeLa lysates using 4E-BP1 antibody.



Western blot analysis of 4E-BP1 in SH-SY5Y, C2C12 and 3T3 lysates using 4E-BP1 antibody.



Western blot analysis of 4E-BP1 in Jurkat, HeLa and C6 lysates using 4E-BP1 antibody.



Western blot analysis of 4E-BP1 in C2C12, A549 and 3T3 lysates using 4E-BP1 antibody.