

## 67KDA LAMININ RECEPTOR RABBIT MAB

**Cat.#:** N261780

**Product Name:** Anti-67kDa Laminin Receptor Rabbit Monoclonal Antibody

**Synonyms:** SA; LBP; LRP; p40; 67LR; ICAS; lamR; 37LRP; LAMBR; LAMRI; LRP/LR; LBP/p40; NEM/1CHD4

**UNIPROT ID:** P08865

**Background:** Required for the assembly and/or stability of the 40S ribosomal subunit. Required for the processing of the 20S rRNA-precursor to mature 18S rRNA in a late step of the maturation of 40S ribosomal subunits. Also functions as a cell surface receptor for laminin. Plays a role in cell adhesion to the basement membrane and in the consequent activation of signaling transduction pathways.

**Immunogen:** A synthetic peptide of human 67kDa Laminin Receptor

**Applications:** WB,IP

**Recommended Dilutions:** WB: 1/500-1/1000 IP: 1/20

**Host Species:** Rabbit

**Clonality:** Rabbit Monoclonal

**Clone ID:** R01-1D4

**MW:** Calculated MW: 33 kDa; Observed MW: 40 kDa

**Isotype:** IgG

**Purification:** Affinity Purified

**Species Reactivity:** Human,Mouse,Rat

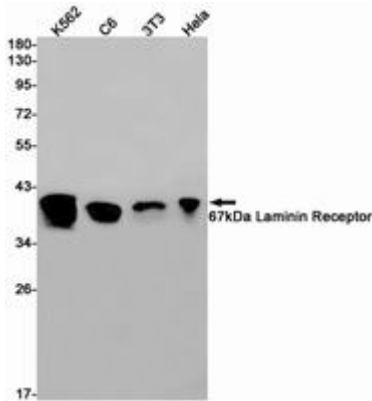
**Conjugation:** Unconjugated

**Modification:** Unmodified

**Constituents:** PBS (without Mg<sup>2+</sup> and Ca<sup>2+</sup>), pH 7.3 containing 50% glycerol, 0.5% BSA and 0.02% sodium azide

**Research Areas:** Cardiovascular

**Storage & Shipping:** Store at -20°C. Avoid repeated freezing and thawing



Western blot analysis of 67kDa Laminin Receptor in K562, C6, 3T3, HeLa lysates using 67kDa Laminin Receptor antibody.