

A RAF RABBIT MAB

Cat.#: N263204

Product Name: Anti-A RAF Rabbit Monoclonal Antibody

Synonyms: ARAF; ARAF1; PKS; PKS2; Serine/threonine-protein kinase A-Raf; Proto-oncogene A-Raf; Proto-oncogene A-Raf-1; Proto-oncogene Pks

UNIPROT ID: P10398

Background: Involved in the transduction of mitogenic signals from the cell membrane to the nucleus. May also regulate the TOR signaling cascade.

Immunogen: Recombinant protein of human A RAF

Applications: WB,IHC-P

Recommended Dilutions: WB: 1/500-1/1000 IHC: 1/50-1/100

Host Species: Rabbit

Clonality: Rabbit Monoclonal

Clone ID: R02-0C6

MW: Calculated MW: 68 kDa; Observed MW: 68 kDa

Isotype: IgG

Purification: Affinity Purified

Species Reactivity: Human

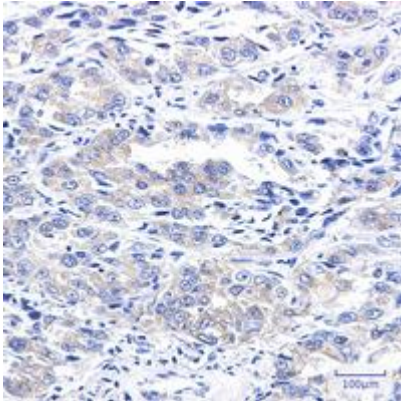
Conjugation: Unconjugated

Modification: Unmodified

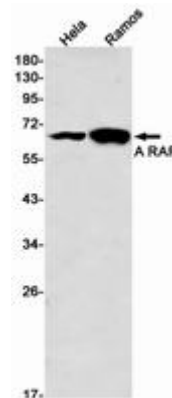
Constituents: PBS (without Mg²⁺ and Ca²⁺), pH 7.3 containing 50% glycerol, 0.5% BSA and 0.02% sodium azide

Research Areas: Signal Transduction

Storage & Shipping: Store at -20°C. Avoid repeated freezing and thawing



Immunohistochemistry analysis of paraffin-embedded Human lung cancer using A RAF antibody. High-pressure and temperature Sodium Citrate pH 6.0 was used for antigen retrieval.



Western blot analysis of A RAF in Hela, Ramos lysates using A RAF antibody.