

## A4GALT RABBIT PAB

**Cat.#:** S218656

**Product Name:** Anti-A4GALT Rabbit Polyclonal Antibody

**Synonyms:** PI; PK; Gb3S; P(k); PIPK; A14GALT; A4GALT1

**UNIPROT ID:** Q9NPC4 (Gene Accession - BC017068 )

**Background:** The protein encoded by this gene catalyzes the transfer of galactose to lactosylceramide to form globotriaosylceramide, which has been identified as the P(k) antigen of the P blood group system. This protein, a type II membrane protein found in the Golgi, is also required for the synthesis of the bacterial verotoxins receptor. Alternatively spliced transcript variants have been found for this gene.

**Immunogen:** Fusion protein of human A4GALT

**Applications:** ELISA, IHC

**Recommended Dilutions:** IHC: 20-100; ELISA: 5000-10000

**Host Species:** Rabbit

**Clonality:** Rabbit Polyclonal

**Isotype:** Immunogen-specific rabbit IgG

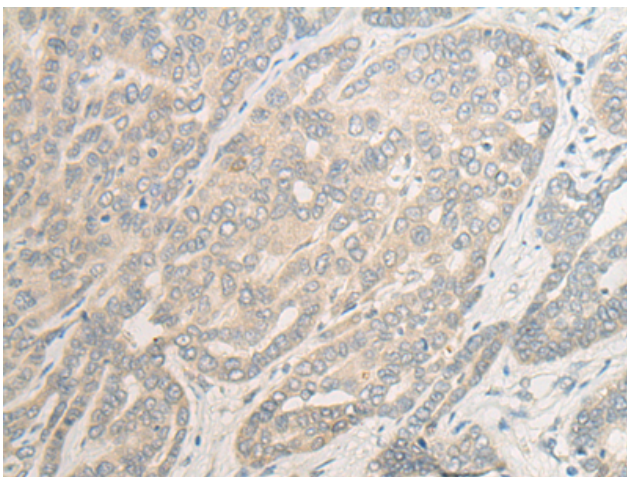
**Purification:** Antigen affinity purification

**Species Reactivity:** Human, Mouse, Rat

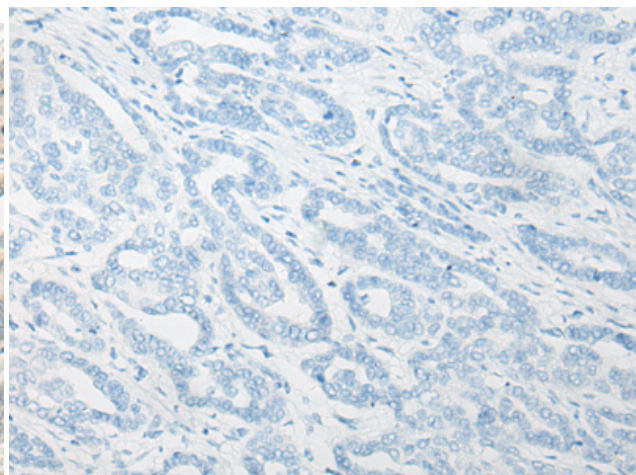
**Constituents:** PBS (without Mg<sup>2+</sup> and Ca<sup>2+</sup>), pH 7.4, 150 mM NaCl, 0.05% Sodium Azide and 40% glycerol

**Research Areas:** Cardiovascular

**Storage & Shipping:** Store at -20°C. Avoid repeated freezing and thawing



Immunohistochemistry analysis of paraffin embedded Human liver cancer tissue using 218656(A4GALT Antibody) at a dilution of 1/20(Cell membrane).



In comparison with the IHC on the left, the same paraffin-embedded Human liver cancer tissue is first treated with the fusion protein and then with 218656(Anti-A4GALT Antibody) at dilution 1/20.