

ABCB1 RABBIT PAB

Cat.#: S213659

Product Name: Anti-ABCB1 Rabbit Polyclonal Antibody

Synonyms: CLCS; MDR1; P-GP; PGY1; ABC20; CD243; GPI70

UNIPROT ID: P08183 (Gene Accession - NP_000918)

Background: The membrane-associated protein encoded by this gene is a member of the superfamily of ATP-binding cassette (ABC) transporters. ABC proteins transport various molecules across extra- and intra-cellular membranes. ABC genes are divided into seven distinct subfamilies (ABCI, MDR/TAP, MRP, ALD, OABP, GCN20, White). This protein is a member of the MDR/TAP subfamily. Members of the MDR/TAP subfamily are involved in multidrug resistance.

Immunogen: Synthetic peptide of human ABCB1

Applications: ELISA, IHC

Recommended Dilutions: IHC: 50-200; ELISA: 2000-5000

Host Species: Rabbit

Clonality: Rabbit Polyclonal

Isotype: Immunogen-specific rabbit IgG

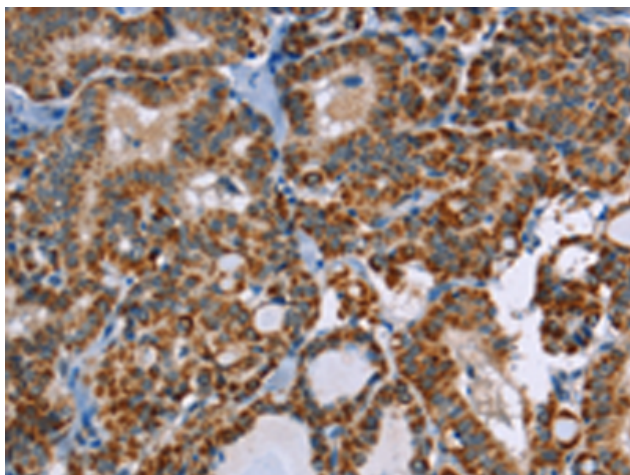
Purification: Antigen affinity purification

Species Reactivity: Human

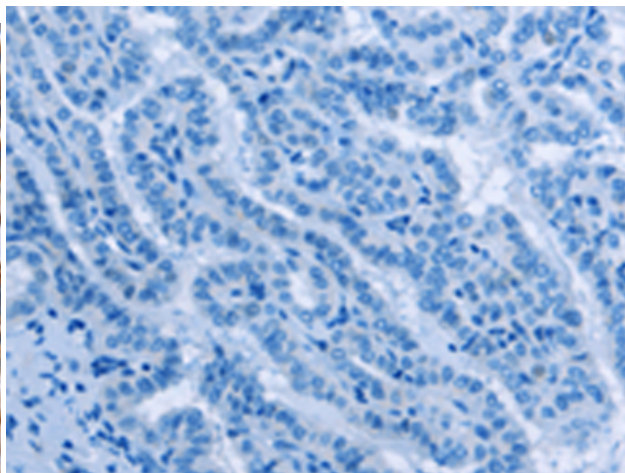
Constituents: PBS (without Mg²⁺ and Ca²⁺), pH 7.4, 150 mM NaCl, 0.05% Sodium Azide and 40% glycerol

Research Areas: Metabolism, Cancer, Stem Cells

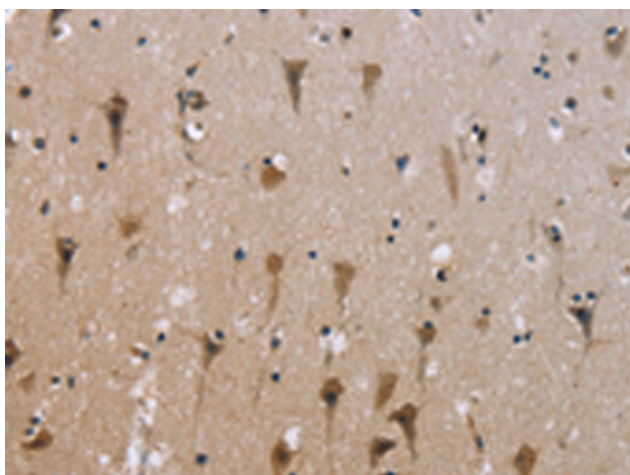
Storage & Shipping: Store at -20°C. Avoid repeated freezing and thawing



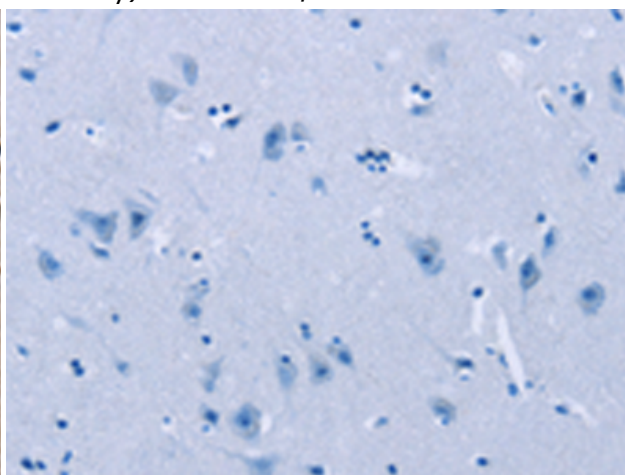
Immunohistochemistry analysis of paraffin embedded Human thyroid cancer tissue using 213659(ABCBI Antibody) at a dilution of 1/30(Cytoplasm).



In comparison with the IHC on the left, the same paraffin-embedded Human thyroid cancer tissue is first treated with the synthetic peptide and then with 213659(Anti-ABCBI Antibody) at dilution 1/30.



The image on the left is immunohistochemistry of paraffin-embedded Human brain tissue using 213659(Anti-ABCBI Antibody) at a dilution of 1/30.



In comparison with the IHC on the left, the same paraffin-embedded Human brain tissue is first treated with synthetic peptide and then with D160612(Anti-ABCBI Antibody) at dilution 1/30.