

ABCB5 (8D2) MOUSE MAB

Cat.#: N261227

Product Name: Anti-ABCB5 (8D2) Mouse Monoclonal Antibody

Synonyms: ABCB5 P-gp; ATP binding cassette sub family B (MDR/TAP) member 5; P glycoprotein ABCB5

UNIPROT ID: Q2M3G0

Background: Drug efflux transporter present in a number of stem cells that acts as a regulator of cellular differentiation. Able to mediate efflux from cells of the rhodamine dye and of the therapeutic drug doxorubicin. Specifically present in limbal stem cells, where it plays a key role in corneal development and repair.

Immunogen: Synthetic Peptide of ABCB5

Applications: WB, ICC/IF

Recommended Dilutions: WB: 1/500-1/1000 IF: 1/50-1/200

Host Species: Mouse

Clonality: Mouse Monoclonal

Clone ID: 8D2-2B8-4E8

MW: Calculated MW: 139 kDa; Observed MW: 90 kDa

Isotype: IgG1

Purification: Affinity Purified

Species Reactivity: Human

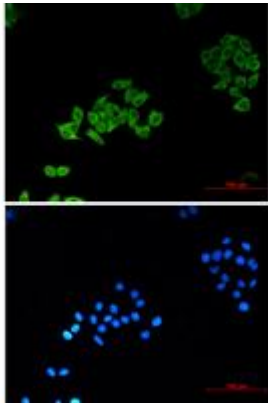
Conjugation: Unconjugated

Modification: Unmodified

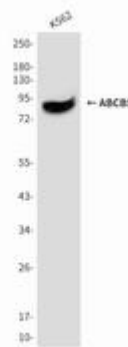
Constituents: PBS (without Mg²⁺ and Ca²⁺), pH 7.3 containing 50% glycerol, 0.5% BSA and 0.02% sodium azide

Research Areas: Signal Transduction

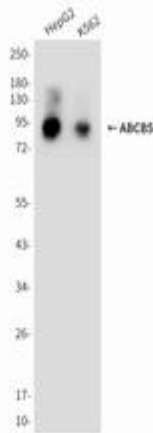
Storage & Shipping: Store at -20°C. Avoid repeated freezing and thawing



Immunocytochemistry analysis of ABCB5 (8D2) (green) in Hela using ABCB5 (8D2) antibody, and DAPI (blue)



Western blot analysis of ABCB5 in K562 lysates using ABCB5 antibody.



Western blot analysis of ABCB5 (8D2) in HepG2, K562 lysates using ABCB5 (8D2) antibody.