

## ABCB6 RABBIT PAB

**Cat.#:** S216898

**Product Name:** Anti-ABCB6 Rabbit Polyclonal Antibody

**Synonyms:** ABC; LAN; PRP; umat; MTABC3

**UNIPROT ID:** Q9NP58 (Gene Accession - BC000559 )

**Background:** This gene encodes a member of the ATP-binding cassette (ABC) transporter superfamily. ABC proteins transport various molecules across extra- and intra-cellular membranes. This protein is a member of the heavy metal importer subfamily and plays a role in porphyrin transport. This gene is the molecular basis of the Langereis (Lan) blood group antigen and mutations in this gene underlie familial pseudohyperkalemia and dyschromatosis universalis hereditaria.

**Immunogen:** Fusion protein of human ABCB6

**Applications:** ELISA, WB, IHC

**Recommended Dilutions:** IHC: 50-200;WB: 500-2000;ELISA: 5000-10000

**Host Species:** Rabbit

**Clonality:** Rabbit Polyclonal

**Isotype:** Immunogen-specific rabbit IgG

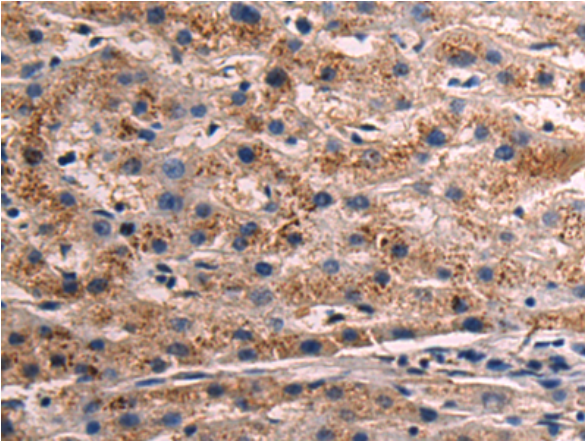
**Purification:** Antigen affinity purification

**Species Reactivity:** Human, Mouse, Rat

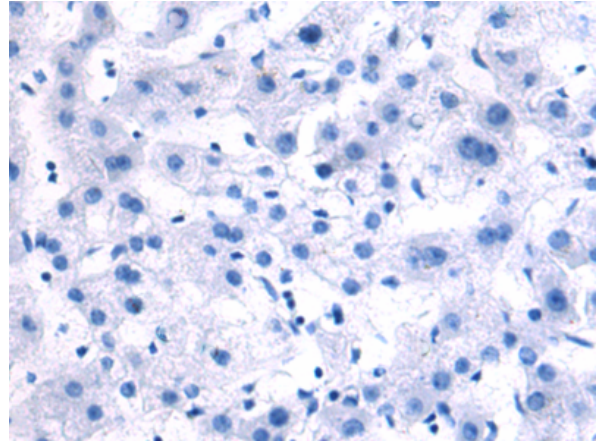
**Constituents:** PBS (without Mg<sup>2+</sup> and Ca<sup>2+</sup>), pH 7.4, 150 mM NaCl, 0.05% Sodium Azide and 40% glycerol

**Research Areas:** Metabolism, Cancer, Cardiovascular

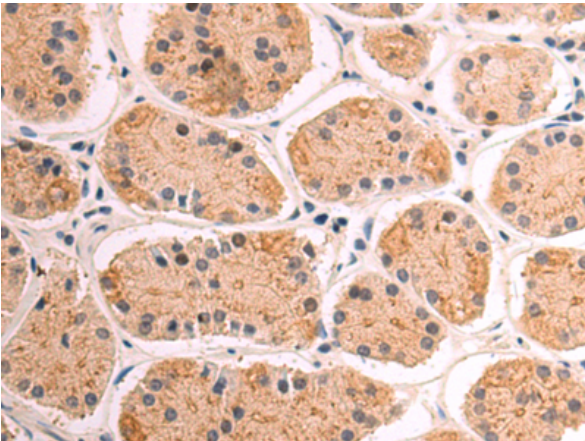
**Storage & Shipping:** Store at -20°C. Avoid repeated freezing and thawing



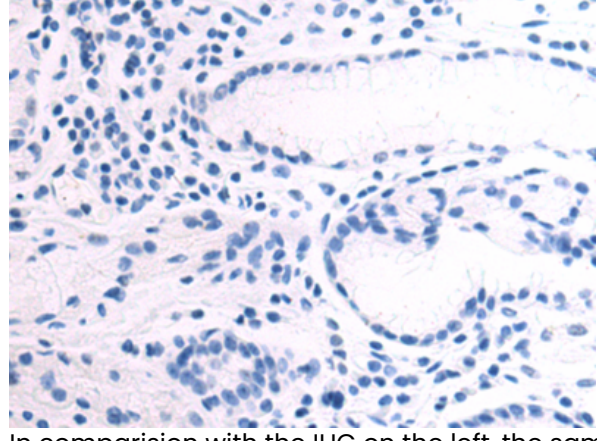
Immunohistochemistry analysis of paraffin embedded Human liver cancer tissue using 216898(ABCB6 Antibody) at a dilution of 1/60(Cytoplasm).



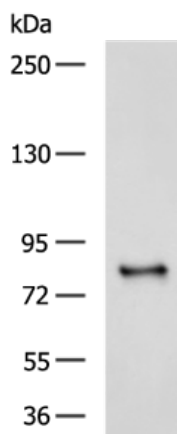
In comparison with the IHC on the left, the same paraffin-embedded Human liver cancer tissue is first treated with the fusion protein and then with 216898(Anti-ABCB6 Antibody) at dilution 1/60.



The image on the left is immunohistochemistry of paraffin-embedded Human esophagus cancer tissue using 216898(Anti-ABCB6 Antibody) at a dilution of 1/60.



In comparison with the IHC on the left, the same paraffin-embedded Human esophagus cancer tissue is first treated with fusion protein and then with D221438(Anti-ABCB6 Antibody) at dilution 1/60.



Gel: 6%SDS-PAGE, Lysate: 40 µg;  
Lane: HeLa cell lysate;  
Primary antibody: 216898(ABCB6 Antibody) at dilution 1/400;  
Secondary antibody: HRP-conjugated Goat anti rabbit IgG at 1/5000 dilution;  
Exposure time: 90 seconds



# Product Description

Pioneering GTPase and Oncogene Product Development since 2010

---