

ABCG2 RABBIT PAB

Cat.#: N225341

Product Name: Anti-ABCG2 Rabbit pAb

Synonyms: ABCG2; ABCP; BCRP; BCRP1; MXR; ATP-binding cassette sub-family G member 2; Breast cancer resistance protein; CDw338; Mitoxantrone resistance-associated protein; Placenta-specific ATP-binding cassette transporter; CD338

UNIPROT ID: Q9UNQ0

Background: ABCG2 confers resistance for a variety of chemotherapeutic agents, including anthracyclines, mitoxantrone, bisantrene and topotecan. Play a major role in the multidrug resistance phenotype of several cancer cell lines. When overexpressed, the transfected cells become resistant to mitoxantrone, daunorubicin and doxorubicin, display diminished intracellular accumulation of daunorubicin, and manifest an ATP-dependent increase in the efflux of rhodamine 123.

Immunogen: The antiserum was produced against synthesized peptide derived from human ABCG2. AA range:289-338

Applications: WB,IHC-P,ELISA

Recommended Dilutions: WB: 1/500-1/1000 IHC: 1/50-1/100 ELISA: 1/10000

Host Species: Rabbit

Clonality: Rabbit Polyclonal

Clone ID: -

MW: Calculated MW: 72 kDa; Observed MW: 72 kDa

Isotype: IgG

Purification: Affinity Chromatography

Species Reactivity: Human

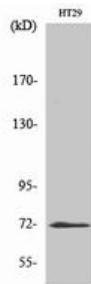
Conjugation: Unconjugated

Modification: Unmodified

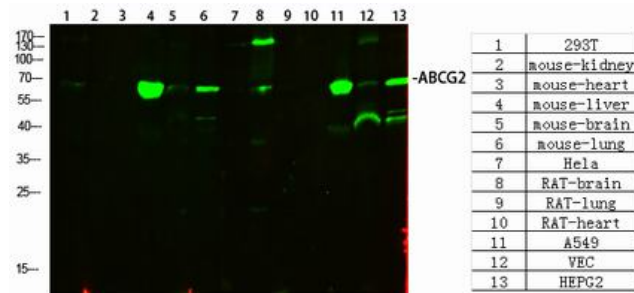
Constituents: PBS (without Mg²⁺ and Ca²⁺), pH 7.3 containing 50% glycerol, 0.5% BSA and 0.02% sodium azide

Research Areas: Stem Cells

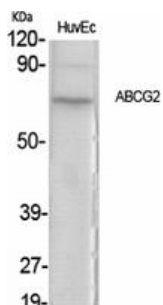
Storage & Shipping: Store at -20°C. Avoid repeated freezing and thawing



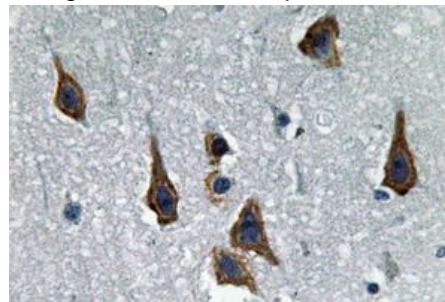
Western blot analysis of ABCG2 in HT-29 lysates using ABCG2 antibody



Western blot analysis of ABCG2 in various lysates using ABCG2 antibody.



Western blot analysis of ABCG2 in various lysates using ABCG2 antibody.



Immunohistochemistry analysis of paraffin-embedded Human brain using ABCG2 antibody. High-pressure and temperature Sodium Citrate pH 6.0 was used for antigen retrieval. Sample with blocking peptide on the right.