

## ABHD1 RABBIT PAB

**Cat.#:** S210693

**Product Name:** Anti-ABHD1 Rabbit Polyclonal Antibody

**Synonyms:** LABH1

**UNIPROT ID:** Q96SE0 (Gene Accession - BC039576 )

**Background:** This gene is a member of the AB hydrolase superfamily and encodes a protein with an alpha/beta hydrolase fold. This domain is common to a number of hydrolytic enzymes of widely differing phylogenetic origins and catalytic functions.

**Immunogen:** Fusion protein of human ABHD1

**Applications:** ELISA, IHC

**Recommended Dilutions:** IHC: 15-50; ELISA: 1000-2000

**Host Species:** Rabbit

**Clonality:** Rabbit Polyclonal

**Isotype:** Immunogen-specific rabbit IgG

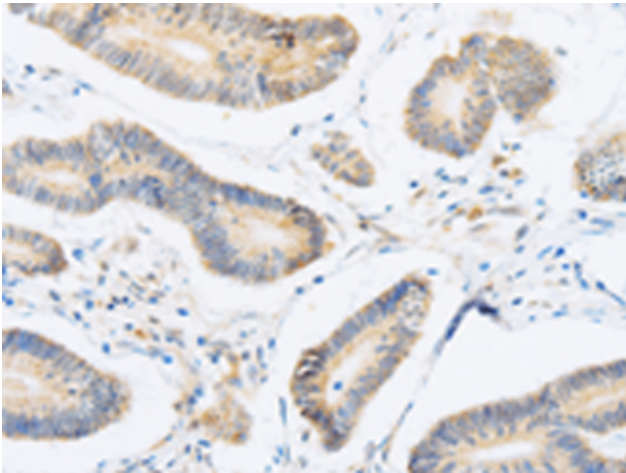
**Purification:** Antigen affinity purification

**Species Reactivity:** Human

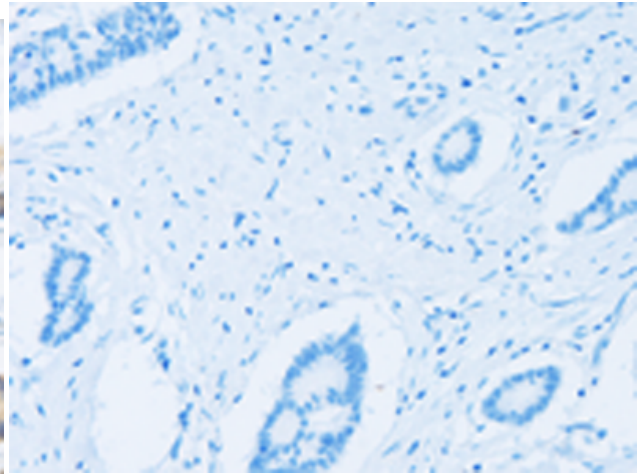
**Constituents:** PBS (without Mg<sup>2+</sup> and Ca<sup>2+</sup>), pH 7.4, 150 mM NaCl, 0.05% Sodium Azide and 40% glycerol

**Research Areas:** Cell Biology

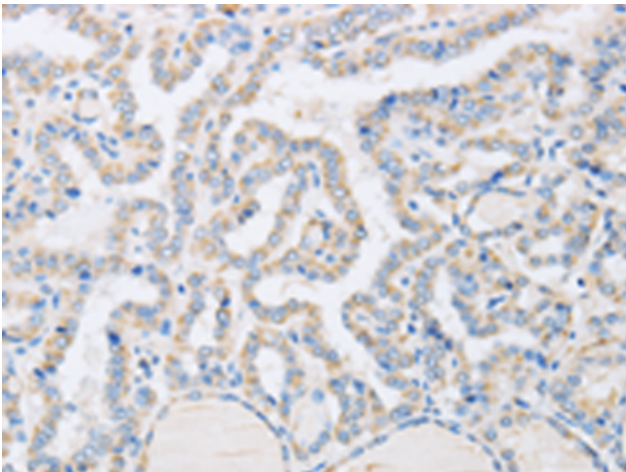
**Storage & Shipping:** Store at -20°C. Avoid repeated freezing and thawing



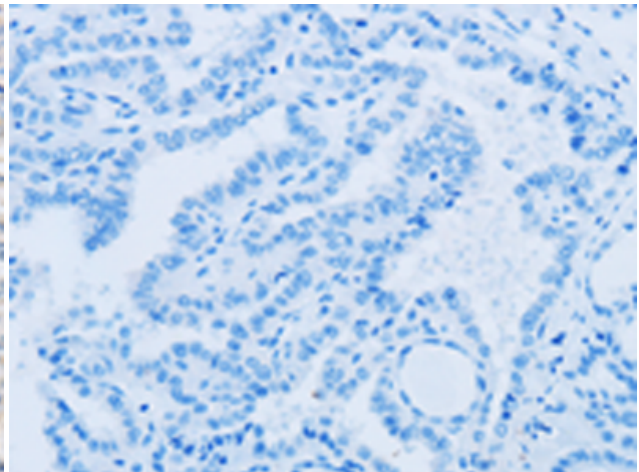
Immunohistochemistry analysis of paraffin embedded Human colon cancer tissue using 210693 (ABHD1 Antibody) at a dilution of 1/15 (Cytoplasm).



In comparison with the IHC on the left, the same paraffin-embedded Human colon cancer tissue is first treated with the fusion protein and then with 210693 (Anti-ABHD1 Antibody) at dilution 1/15.



The image on the left is immunohistochemistry of paraffin-embedded Human gastric cancer tissue using 210693 (Anti-ABHD1 Antibody) at a dilution of 1/15.



In comparison with the IHC on the left, the same paraffin-embedded Human gastric cancer tissue is first treated with fusion protein and then with D121448 (Anti-ABHD1 Antibody) at dilution 1/15.