

ABHD17B RABBIT PAB

Cat.#: S222003

Product Name: Anti-ABHD17B Rabbit Polyclonal Antibody

Synonyms: CGI-67; C9orf77; FAM108B1

UNIPROT ID: Q5VST6 (Gene Accession - NP_001020951)

Background: Enables palmitoyl-(protein) hydrolase activity. Involved in protein depalmitoylation. Located in membrane.

Immunogen: Synthetic peptide of human ABHD17B

Applications: ELISA, IHC

Recommended Dilutions: IHC: 50-200; ELISA: 5000-10000

Host Species: Rabbit

Clonality: Rabbit Polyclonal

Isotype: Immunogen-specific rabbit IgG

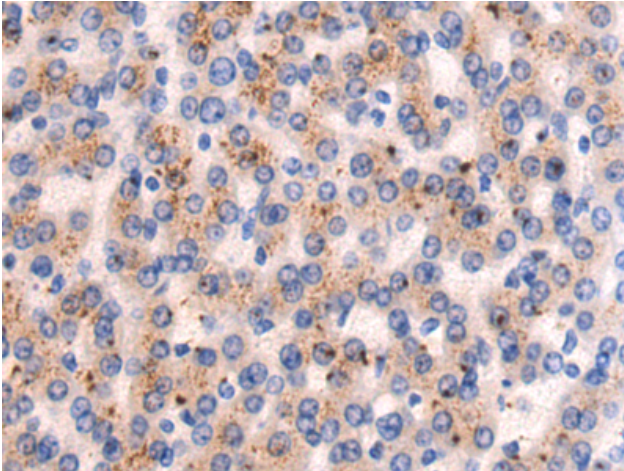
Purification: Antigen affinity purification

Species Reactivity: Human, Mouse, Rat

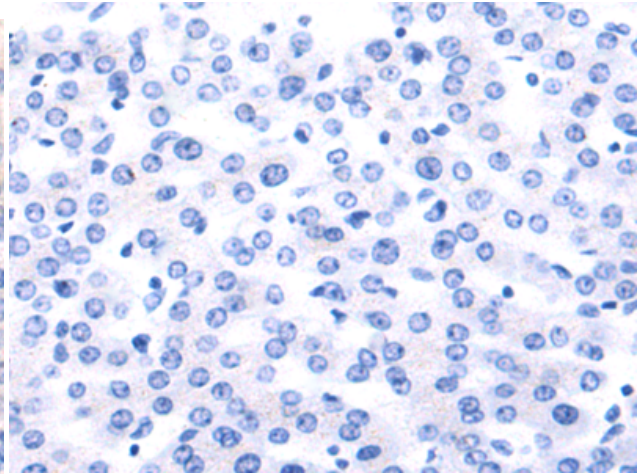
Constituents: PBS (without Mg²⁺ and Ca²⁺), pH 7.4, 150 mM NaCl, 0.05% Sodium Azide and 40% glycerol

Research Areas: Cell Biology

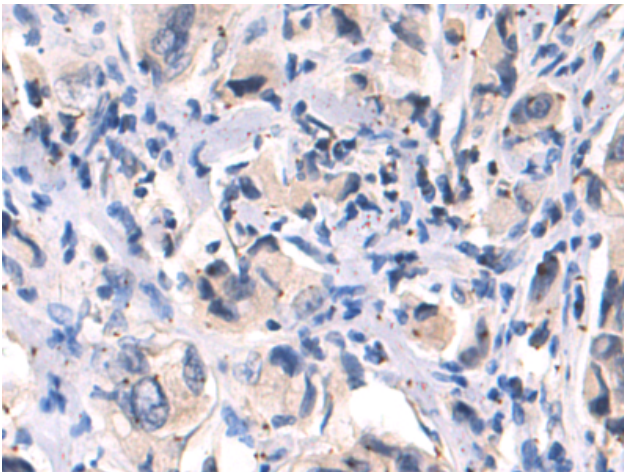
Storage & Shipping: Store at -20°C. Avoid repeated freezing and thawing



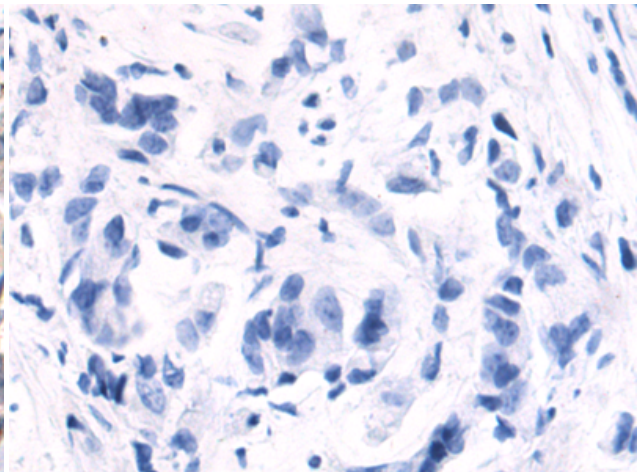
Immunohistochemistry analysis of paraffin embedded Human liver cancer tissue using 222003 (ABHD17B Antibody) at a dilution of 1/50 (Cytoplasm).



In comparison with the IHC on the left, the same paraffin-embedded Human liver cancer tissue is first treated with the synthetic peptide and then with 222003 (Anti-ABHD17B Antibody) at dilution 1/50.



The image on the left is immunohistochemistry of paraffin-embedded Human breast cancer tissue using 222003 (Anti-ABHD17B Antibody) at a dilution of 1/50.



In comparison with the IHC on the left, the same paraffin-embedded Human breast cancer tissue is first treated with synthetic peptide and then with D263871 (Anti-ABHD17B Antibody) at dilution 1/50.