

ABHD6 RABBIT PAB

Cat.#: S221475

Product Name: Anti-ABHD6 Rabbit Polyclonal Antibody

Synonyms:

UNIPROT ID: Q9BV23 (Gene Accession - NP_065727)

Background: Lipase that preferentially hydrolysis medium-chain saturated monoacylglycerols including 2-arachidonoylglycerol (PubMed:22969151). Through 2-arachidonoylglycerol degradation may regulate endocannabinoid signaling pathways. May also have a lysophosphatidyl lipase activity with a preference for lysophosphatidylglycerol among other lysophospholipids (By similarity).

Immunogen: Synthetic peptide of human ABHD6

Applications: ELISA, IHC

Recommended Dilutions: IHC: 25-100; ELISA: 5000-10000

Host Species: Rabbit

Clonality: Rabbit Polyclonal

Isotype: Immunogen-specific rabbit IgG

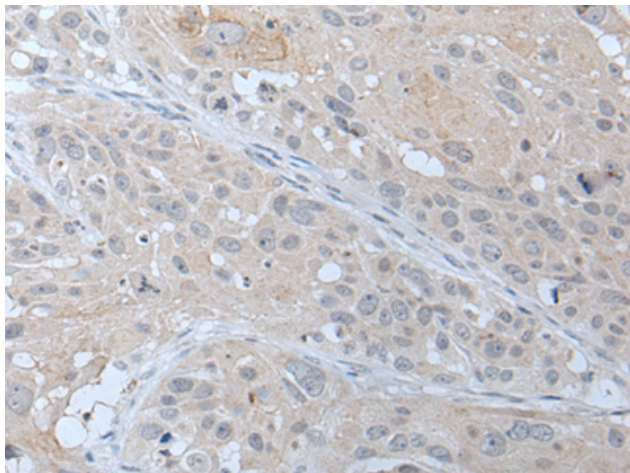
Purification: Antigen affinity purification

Species Reactivity: Human, Mouse, Rat

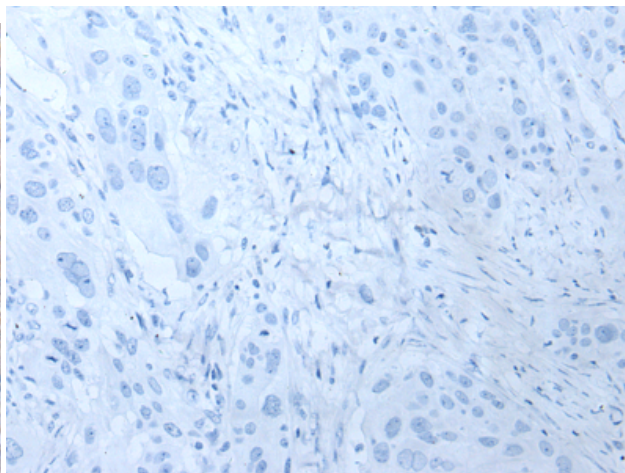
Constituents: PBS (without Mg²⁺ and Ca²⁺), pH 7.4, 150 mM NaCl, 0.05% Sodium Azide and 40% glycerol

Research Areas: Metabolism

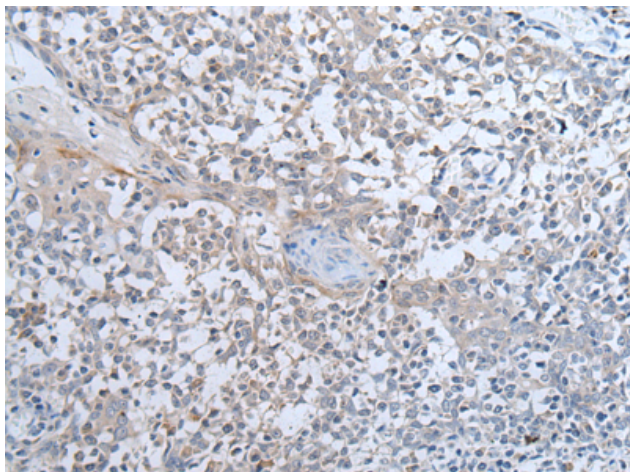
Storage & Shipping: Store at -20°C. Avoid repeated freezing and thawing



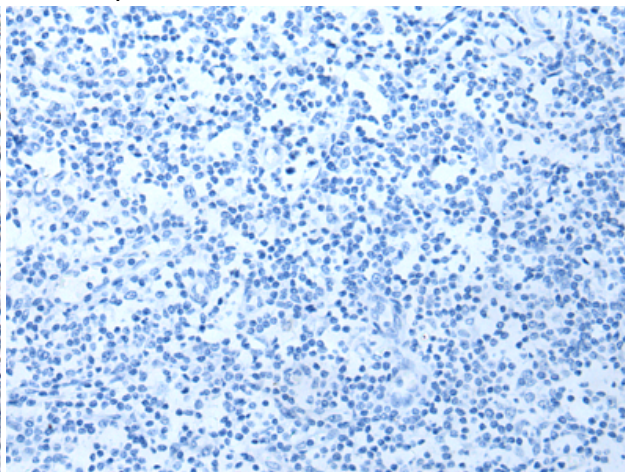
Immunohistochemistry analysis of paraffin embedded Human esophagus cancer tissue using 221475(ABHD6 Antibody) at a dilution of 1/35(Cell membrane).



In comparison with the IHC on the left, the same paraffin-embedded Human esophagus cancer tissue is first treated with the synthetic peptide and then with 221475(Anti-ABHD6 Antibody) at dilution 1/35.



The image on the left is immunohistochemistry of paraffin-embedded Human tonsil tissue using 221475(Anti-ABHD6 Antibody) at a dilution of 1/35.



In comparison with the IHC on the left, the same paraffin-embedded Human tonsil tissue is first treated with synthetic peptide and then with D263086(Anti-ABHD6 Antibody) at dilution 1/35.