

ABI2 RABBIT PAB

Cat.#: S216903

Product Name: Anti-ABI2 Rabbit Polyclonal Antibody

Synonyms: AIP1; ABI-2; ABI2B; AIP-1; AbIBP3; argBP1; SSH3BP2; argBPIA; argBPIB

UNIPROT ID: Q9NYB9 (Gene Accession - BC001439)

Background: May act in regulation of cell growth and transformation by interacting with nonreceptor tyrosine kinases ABL1 and/or ABL2. Part of the WAVE complex that regulates lamellipodia formation. The WAVE complex regulates actin filament reorganization via its interaction with the Arp2/3 complex. Regulates ABL1/c-Abl-mediated phosphorylation of MENA. As component of the WAVE1 complex required for BDNF-NTRK2 endocytic trafficking and signaling from early endosomes.

Immunogen: Fusion protein of human ABI2

Applications: ELISA, IHC

Recommended Dilutions: IHC: 50-100; ELISA: 5000-10000

Host Species: Rabbit

Clonality: Rabbit Polyclonal

Isotype: Immunogen-specific rabbit IgG

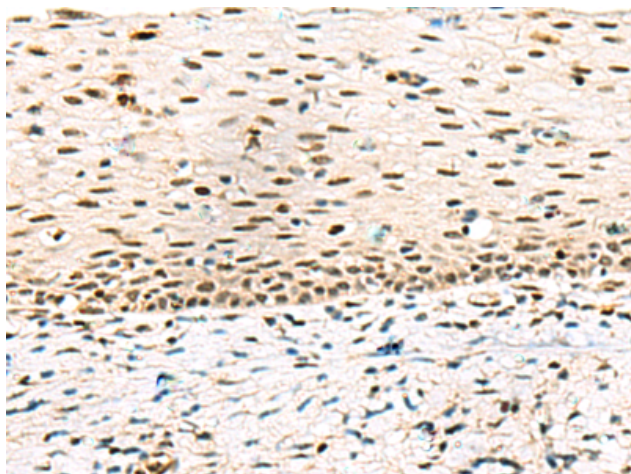
Purification: Antigen affinity purification

Species Reactivity: Human

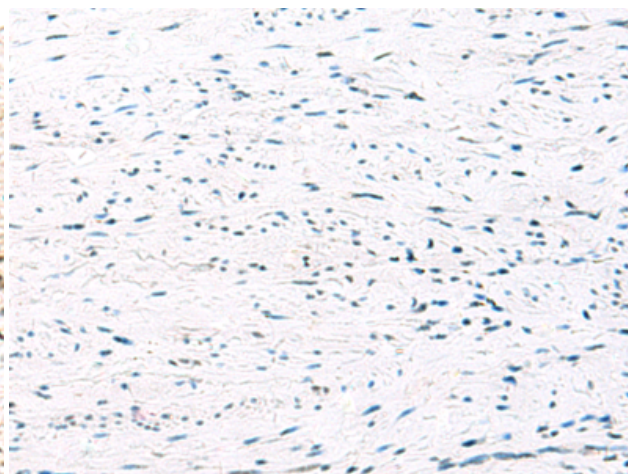
Constituents: PBS (without Mg²⁺ and Ca²⁺), pH 7.4, 150 mM NaCl, 0.05% Sodium Azide and 40% glycerol

Research Areas: Cancer

Storage & Shipping: Store at -20°C. Avoid repeated freezing and thawing



Immunohistochemistry analysis of paraffin embedded Human cervical cancer tissue using 216903(ABI2 Antibody) at a dilution of 1/45(Nucleus).



In comparison with the IHC on the left, the same paraffin-embedded Human cervical cancer tissue is first treated with the fusion protein and then with 216903(Anti-ABI2 Antibody) at dilution 1/45.