

ACAP1 RABBIT PAB

Cat.#: S218469

Product Name: Anti-ACAP1 Rabbit Polyclonal Antibody

Synonyms: CENTB1

UNIPROT ID: Q15027 (Gene Accession - BC018543)

Background: ACAP1, also designated Centaurin-? 1 (CENTB1 or Cnt-?1), is a member of the ADP ribosylation factor family of ARF6 GTPase-activating proteins (GAP). GAPs are important regulators of Arf function by controlling the return of ARF to its inactive state. ACAP1 is related to AGAP1 and ASAP1, and all three proteins are similarly expressed in fibroblast cells such as NIH/3T3. Internalization and recycling of integrin receptors is important in cell adhesion and migration modulation, and once inside a cell, proteins and membranes are transported to the endosome where they are sorted for recycling or degradation. ACAP1 promotes cargo sorting by associating directly to recycling cargo proteins. Preventing this interaction inhibits protein recycling. ACAP1 binds transferrin receptors, promoting their transport to the plasma membrane from the endosome. Akt induced phosphorylation of ACAP1 at Ser 554 regulates ACAP1 interaction to integrin in endosomes, and downregulation of Akt or ACAP1 may inhibit cell migration on Fibronectin.

Immunogen: Fusion protein of human ACAP1

Applications: ELISA, WB, IHC

Recommended Dilutions: IHC: 25-100;WB: 200-1000;ELISA: 5000-10000

Host Species: Rabbit

Clonality: Rabbit Polyclonal

Isotype: Immunogen-specific rabbit IgG

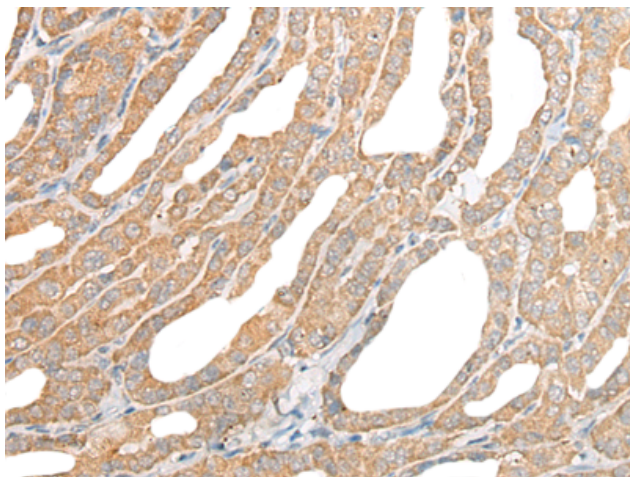
Purification: Antigen affinity purification

Species Reactivity: Human, Mouse

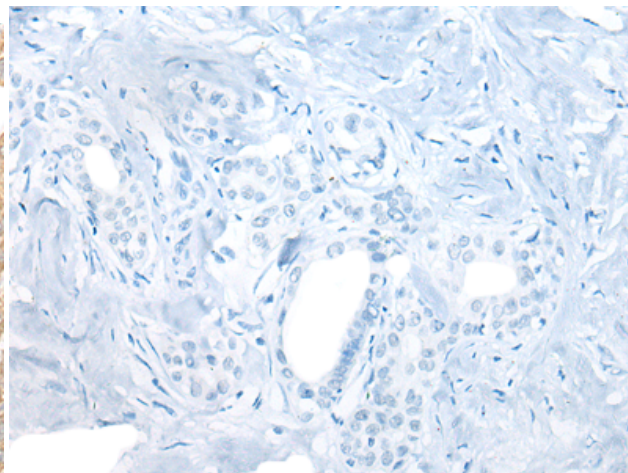
Constituents: PBS (without Mg²⁺ and Ca²⁺), pH 7.4, 150 mM NaCl, 0.05% Sodium Azide and 40% glycerol

Research Areas: Signal Transduction

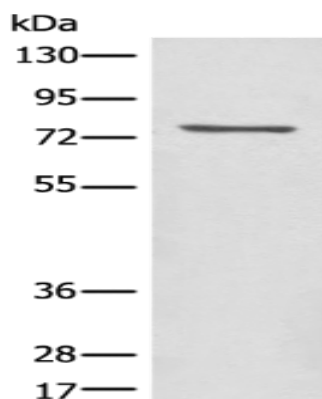
Storage & Shipping: Store at -20°C. Avoid repeated freezing and thawing



Immunohistochemistry analysis of paraffin embedded Human thyroid cancer tissue using 218469(ACAP1 Antibody) at a dilution of 1/25(Cytoplasm).



In comparison with the IHC on the left, the same paraffin-embedded Human thyroid cancer tissue is first treated with the fusion protein and then with 218469(Anti-ACAP1 Antibody) at dilution 1/25.



Gel: 6%SDS-PAGE, Lysate: 40 μ g;
Lane: Mouse lung tissue lysate;
Primary antibody: 218469(ACAP1 Antibody) at dilution 1/450;
Secondary antibody: Goat anti rabbit IgG at 1/8000 dilution;
Exposure time: 1 minute