

ACETYL-ALPHA TUBULIN (LYS40) (6B5) MOUSE MAB

Cat.#: N261389

Product Name: Anti-Acetyl-Alpha Tubulin (Lys40) (6B5) Mouse Monoclonal Antibody

Synonyms: alpha tubulin 2; B alpha 1; H2 alpha; Hum a tub 1; TUBA1; TUBA1A; Tubulin alpha 1chain

UNIPROT ID: P68363

Background: TUBA1A Tubulin is the major constituent of microtubules. It binds two moles of GTP, one at an exchangeable site on the beta chain and one at a non-exchangeable site on the alpha-chain.

Immunogen: Synthetic peptide conjugated to KLH.

Applications: WB,IHC-P

Recommended Dilutions: WB: 1/500-1/1000 IHC: 1/50-1/100

Host Species: Mouse

Clonality: Mouse Monoclonal

Clone ID: 6B5-1G7-3F9

MW: Calculated MW: 50 kDa; Observed MW: 50 kDa

Isotype: IgG1

Purification: Affinity Purified

Species Reactivity: Human,Rat,Mouse

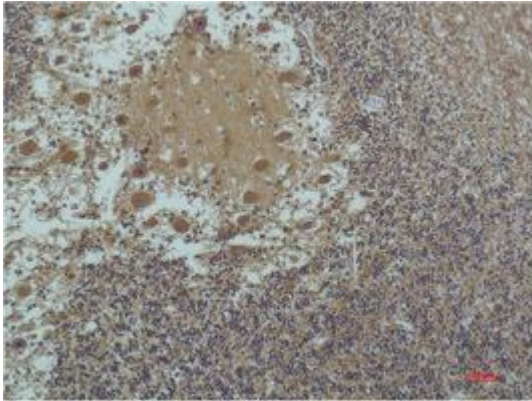
Conjugation: Unconjugated

Modification: Acetylated

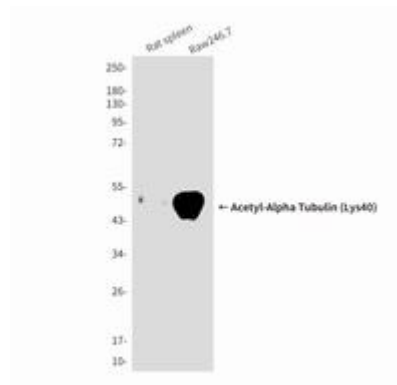
Constituents: PBS (without Mg²⁺ and Ca²⁺), pH 7.3 containing 50% glycerol, 0.5% BSA and 0.02% sodium azide

Research Areas: Signal Transduction

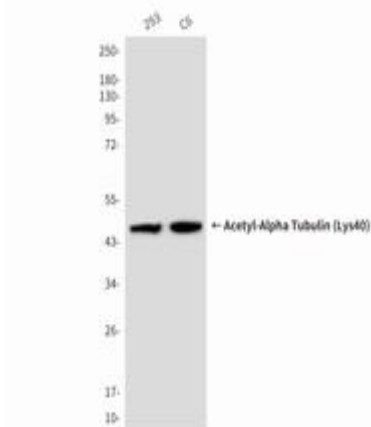
Storage & Shipping: Store at -20°C. Avoid repeated freezing and thawing



Immunohistochemistry analysis of paraffin-embedded Human Brain Tissue using α -tubulin (Acetyl Lys4) antibody. High-pressure and temperature Sodium Citrate pH 6.0 was used for antigen retrieval.



Western blot analysis of Acetyl- α -Tubulin (Lys40) in rat spleen, Raw246.7 lysates using Acetyl- α -Tubulin (Lys40) (6B5) antibody.



Western blot analysis of Acetyl-Alpha Tubulin (Lys40) (6B5) in 293, C6 lysates using Acetyl- α -Tubulin (Lys40) (6B5) antibody.