

## ACIN1 RABBIT PAB

**Cat.#:** S220260

**Product Name:** Anti-ACIN1 Rabbit Polyclonal Antibody

**Synonyms:** ACN; ACINUS; fSAP152

**UNIPROT ID:** Q9UKV3 (Gene Accession - NP\_001158286 )

**Background:** Apoptosis is defined by several morphologic nuclear changes, including chromatin condensation and nuclear fragmentation. This gene encodes a nuclear protein that induces apoptotic chromatin condensation after activation by caspase-3, without inducing DNA fragmentation. This protein has also been shown to be a component of a splicing-dependent multiprotein exon junction complex (EJC) that is deposited at splice junctions on mRNAs, as a consequence of pre-mRNA splicing. It may thus be involved in mRNA metabolism associated with splicing. Alternatively spliced transcript variants encoding different isoforms have been described for this gene.

**Immunogen:** Synthetic peptide of human ACIN1

**Applications:** ELISA, IHC

**Recommended Dilutions:** IHC: 100-300; ELISA: 2000-10000

**Host Species:** Rabbit

**Clonality:** Rabbit Polyclonal

**Isotype:** Immunogen-specific rabbit IgG

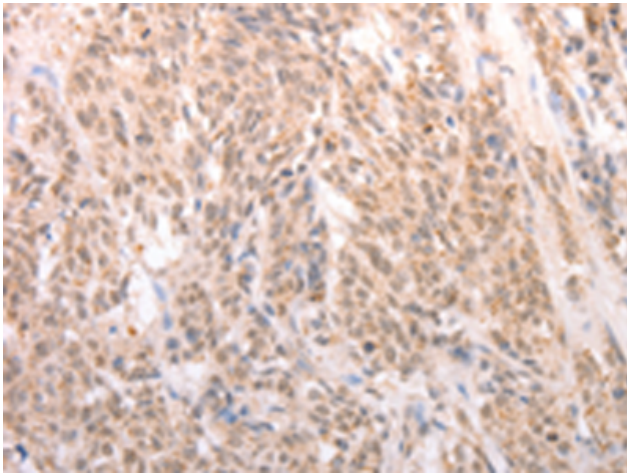
**Purification:** Antigen affinity purification

**Species Reactivity:** Human, Mouse

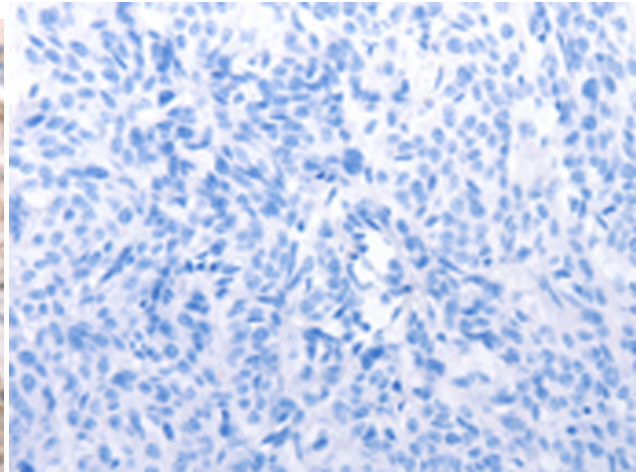
**Constituents:** PBS (without Mg<sup>2+</sup> and Ca<sup>2+</sup>), pH 7.4, 150 mM NaCl, 0.05% Sodium Azide and 40% glycerol

**Research Areas:** Epigenetics and Nuclear Signaling, Cancer

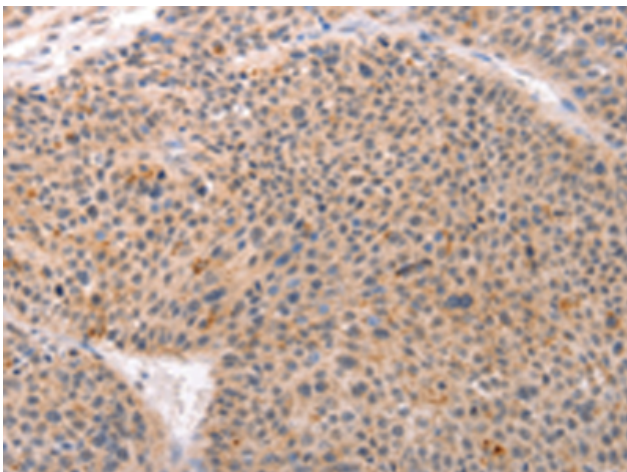
**Storage & Shipping:** Store at -20°C. Avoid repeated freezing and thawing



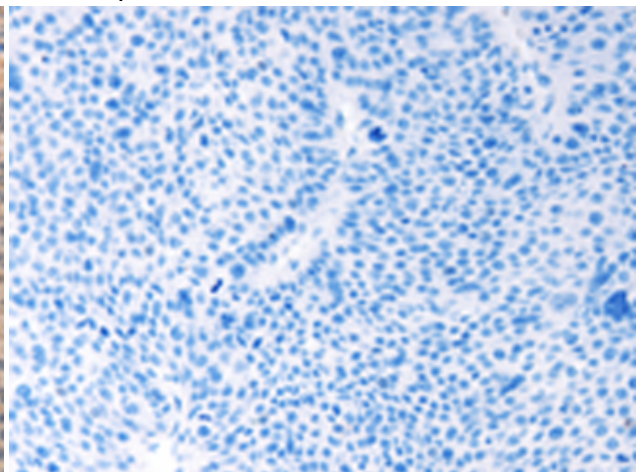
Immunohistochemistry analysis of paraffin embedded Human liver cancer tissue using 220260 (ACINI Antibody) at a dilution of 1/80 (Nucleus, Cytoplasm).



In comparison with the IHC on the left, the same paraffin-embedded Human liver cancer tissue is first treated with the synthetic peptide and then with 220260 (Anti-ACINI Antibody) at dilution 1/80.



The image on the left is immunohistochemistry of paraffin-embedded Human esophagus cancer tissue using 220260 (Anti-ACINI Antibody) at a dilution of 1/80.



In comparison with the IHC on the left, the same paraffin-embedded Human esophagus cancer tissue is first treated with synthetic peptide and then with D261222 (Anti-ACINI Antibody) at dilution 1/80.